

Paris Pavlakis

International Institute for Human Evolutionary Research, Portland<sup>1</sup>

## The Messinian events and the Greek fossil mammal record

Pavlakis, P., 1999 - The Messinian events and the Greek fossil mammal record - in: Reumer, J.W.F. & De Vos, J. (eds.) - ELEPHANTS HAVE A SNORKEL! PAPERS IN HONOUR OF PAUL Y. SONDAAR - DEINSEA 7: 233-251 [ISSN 0923-9308]. Published 10 December 1999

Greek Neogene mammal faunas, being centrally located to the stage of the Messinian play, hold clues to the understanding of this phenomenon. 23 Greek fossil mammal faunas containing 398 taxa, and spanning the period of MN Units 10 to MN15 are analysed, in order to investigate effects the Messinian Events had on Greek Neogene. Updated faunal lists are subjected to cluster statistical analyses for a quantitative estimation of chronological segregation patterns of the faunal assemblages. The Simpson's Faunal Resemblance Index was used as the variable for the faunal correlation. K-Means cluster analysis for two groups distinguished the 3 Samos and the 2 Pikermi faunas as the group with less variation within, than between the two groups in which the 23 faunas were separated. Join cluster analysis' basic pattern did separate the pre- from the post-Messinian faunas, but sampling error due to small faunal size, bias due to skewed sampling of the faunal diversity at the population level, and geographic proximity, could not be factored out. Biochronological (MN Unit) range analysis of 196 species in the faunas showed that the majority of mammals lived in MN12-13 times, and that there was considerable reduction in numbers of large mammal species present in the faunal assemblages after the Messinian. This can be caused not only by the alleged low turn out of (large) Pliocene mammals, but also by sampling error due to insufficient amount of paleontological research done in this time period. Micromammals around the Messinian Stage/Age indicate the presence of variable habitats in the area, dry and wet, forested and open country before, during and after the Messinian. Greek Neogene mammal faunas seem to support the recent understanding that the Messinian 'Event' was lengthy, cyclic in tempo, and diverse in mode.

Correspondence: Paris Pavlakis, International Institute for Human Evolutionary Research, Central Oregon University, Portland, Oregon, USA; <sup>1</sup>present address: Pythagora 15, Holargos, GR-15562 Athens, Greece, e-mail pavlakis@cc.uoa.gr

Keywords: Greece, Neogene, Mammalia, faunas, Messinian.

### INTRODUCTION

For over 30 years earth scientists are trying to describe the events that took place in the Mediterranean Basin during the formation of the Messinian Stage, and to study their climatic and biological effects. The international conference on biotic and climatic effects of the Messinian Event in the Mediterranean, organised in 1995 by the International Institute for Human Evolutionary Research and the Department of Earth Sciences of the University of Garyounis, held in Benghazi Libya, reviewed the data on the Messinian

Event. Recent data show that the Messinian lasted for a long period of time, close to 1.9 My (Hilgen *et al.* 1997), and that it was typified by cyclicality of conditions. The geological age for the onset of the Messinian Stage has been calibrated to 7.26 - 7.12 My (Berggren *et al.* 1995, Vai *et al.* 1993). The beginning of the inflow from the Atlantic to the Mediterranean is dated to c. 5.8 My. Reflooding of the basin dates to 5.0 - 5.3 My (Hodell *et al.* 1994). During this time period, 7 depositional cycles are known to have



occurred in the margins, and about 25 cycles in the center of the basin near Sicily (Butler *et al.* 1995). This is evidenced by the sea-floor seismic reflectors and by the deep-sea cores (Stanley & Wezel 1985). These cycles consisted of changes in water depth and chemistry brought on by evaporation, influx of new water from the Atlantic over the Gibraltar, as well as by additional influx of fresh water from rivers draining into the Mediterranean Basin (Hodell *et al.* 1986). These large rivers cut deep canyons in the circumference of the Mediterranean Basin, as the level of the sea dropped. Geophysical data from northern Sahara confirm the presence of large channels which had cut deep into Tortonian beds before entering the paleo-Sirt Gulf. Some faunal elements indicate a tropical source for these rivers (Gaudant 1987).

Global paleoclimate at the end of the Miocene cooled, as indicated by both deep sea and terrestrial oxygen isotopic records (see Potts 1998). Carbon isotope data indicate that between 8 and 6 My there was a global increase of plant mass using C4 photosynthesis, such as grassland vegetation (Cerling *et al.* 1997). Data from vertebrate paleontological sites in Greece, Libya (Sahabi), Spain and Abu Dhabi seem to support that the Mio/Pliocene time was a period of greater aridity, and that grasslands were widespread. Yet, paleofloral records especially in the northern circum-Mediterranean regions indicate the continued presence of warm-temperate and high humidity vegetation well into the Pliocene (Velitzelos 1995). This apparent contradiction in paleoclimate indicators can be explained by the possible presence of altitudinal and/or latitudinal gradients. Higher elevations could maintain more humid vegetation during arid phases, due to the presence of cloud moisture. Similarly, northern European sites could have had more forest cover than sites located more southerly. Although the oldest paleofloral indications of desert conditions date to the Late Miocene,

desert environments were not widespread before 2.8 My, as indicated by deep-sea records of wind-blown dust off the West Coast of Africa (DeMenocal & Bloemendal 1995). The Messinian was apparently not a period of radical vegetation change, but rather a time of more widespread open vegetation, moderated by climatic oscillations including monsoonal rains.

Zoogeography provides another clue to biotic conditions during the Messinian in the circum-Mediterranean region (see Janis 1993). The taxonomic composition of paleofloras north of the basin clearly shows strong connections with Asia. On the other hand, the macroflora of Sahabi, Libya shows affinities with tropical Africa (Dechamps 1987). The north-south latitudinal gradients implied by the paleofloral pattern, are also shown by the vertebrate faunas (see Hill 1995). Rodent faunas from Asia show affinities with northern and central Spain (Berry 1995). Messinian rodent faunas in the south, however, include the presence of dry-country gerbil species migrating from Africa. In Italy, there are African primates, artiodactyls and *Stegotrabelodon lybicus* of Messinian age in sites in southern Italy, while similarly aged sites in northern Italy lack African elements. Greek Upper Neogene large mammal faunas show open vegetation environments and do not indicate major faunal interchange with Africa. Rather they show connections with contemporaneous sites in Asia, such as Maraghe (Bernor *et al.* 1987, 1996b). The Abu Dhabi fauna on the Arabian Peninsula (Whybrow *et al.* 1999) also shows this latitudinal correlation. It shares many faunal elements with Sahabi, but lacks close connections with similar age sites in the north. For example, the anthracothere *Merycopotamus*, the most common element in the Sahabi fauna (Gaziry 1987), is present in other late Neogene North African sites, such as in Chad, but is absent from Abu Dhabi.

Floral and faunal paleobiogeography during

the Messinian dying such top apparent latitudinal faunal provincial Paleogeography during the Messinian area. The land Africa and Spain ded dry open co indicated by the north of Gibraltar. But more vegetation present as well. proboscideans a southern Europe micromammals way, southward

Finally, the age My coincides with Hominid split. The 'Event' on the Hominids has paleo source of speculation reached the stage (Hill 1995; Wolpaleoanthropology close to the discovery fossils in this time

The Greek Neogene centrally located play, hold clues to phenomenon. Spatial and environmental area, as well as, the Messinian to faunal evolution in the north and beyond. The Greek mainland Miocene to Early died here, in order the effects the Messinians.

**MATERIAL AND METHODS**  
A total of 23 Neogene used in this study



not widespread  
l by deep-sea  
t off the West  
al & Bloemendal  
apparently not a  
change, but rather  
open vegetation,  
llations including

other clue to biotic  
inian in the cir-  
(see Janis 1993).  
n of paleofloras  
hows strong con-  
other hand, the  
a shows affinities  
mps 1987). The  
lients implied by  
also shown by the  
(1995). Rodent fau-  
es with northern  
(1995). Messinian  
however, include  
'gerbil species  
taly, there are  
yls and  
of Messinian age  
hile similarly aged  
African elements.  
e mammal faunas  
onments and do  
terchange with  
onnections with  
sia, such as  
(1996b). The  
abian Peninsula  
shows this latitu-  
many faunal ele-  
s close connec-  
in the north. For  
*Merycopotamus*,  
in the Sahabi  
sent in other late  
s, such as in  
ou Dhabi.

geography during

the Messinian is an active research area, studying such topics as how clear-cut were the apparent latitudinal patterns of vegetation and faunal provinciality during the Messinian. Paleogeography of the Mediterranean basin during the Messinian is also a major research area. The land bridge connecting North Africa and Spain during the Messinian included dry open country and sandy habitats, as indicated by the presence of African gerbils north of Gibraltar (Moya-Sola & Agusti 1989). But more vegetated conditions were probably present as well. African ostriches, monkeys, proboscideans among other species, reached southern Europe while other species, such as micromammals and bears migrated the other way, southwards, inhabiting North Africa.

Finally, the age of the Messinian, c. 7 to 5 My coincides with the estimated Ape - Hominid split. The effect of the Messinian 'Event' on the origin and evolution of early Hominids has passed the stage of being a source of speculation (Brain 1981), and reached the stage of active scientific research (Hill 1995; WoldeGabriel *et al.* 1994). Paleoanthropological field research is coming close to the discovery of definitive hominid fossils in this time period.

The Greek Neogene faunal localities, being centrally located to the stage of the Messinian play, hold clues to the understanding of this phenomenon. Specifically, to the climatological and environmental effects it had to the area, as well as, to the relation of the Messinian to faunal and floral turnover and evolution in the circum-Mediterranean region and beyond. The major mammal faunas on the Greek mainland and islands of Late Miocene to Early Pliocene age will be studied here, in order to investigate aspects of the effects the Messinian had on land mammals.

#### MATERIAL AND METHODS

A total of 23 Neogene mammal faunas were used in this study consisting of a total of 398

taxa. They were selected based on their chronological proximity to the time period of the deposition of Messinian Stage beds i.e., faunas of Late Turolian to Early Ruscinian Mammal Age, or MN11 to MN15. Second criterion was the sample size. An effort was made to compile the largest possible mammalian faunal samples. Faunal samples with a size of less than 5 taxa were excluded from the study, for reasons of approximation to the populations and for statistical confidence of the analyses. An effort was made to use the most recently taxonomically updated faunal lists. Cf., aff., question-marks (?) and quotes (") in taxa names were omitted. Genera were used without referring to sp. nov., gen. (et sp.) nov. or names in quotes. The compiled faunal assemblages at the species level and the estimated age range in terms of MN Units used in this study are listed below in alphabetical order.

#### Ano Metochi 2,3

MN 13-14 (partially after Van der Meulen & Van Kolfschoten 1986).  
*Amblycoptus* sp., *Apodemus dominans*,  
*Apodemus gudrunae*, *Hipparion* sp.,  
*Micromys bendai*, *Myomimus maritsensis*,  
*Occitanomys adroveri*, *Pliopetaurista dehneli*,  
*Pliospalax* sp., *Prolagus michauxi*,  
*Pseudomeriones abbreviatus*, *Rhagapodemus hautimagnensis*, *Schizogalerix* sp., *Tamias* sp. (de Bruijn 1989, Doukas 1989, Steffens *et al.* 1979).

#### Apollakia

MN 15 (Benda *et al.* 1977)  
*Apodemus dominans*, *Blarinella* sp., *Castor fiber*, *Cervus* aff. *philisi*, *Crocidura* sp.,  
*Dolomys* sp., *Episoriculus gibberodon*,  
*Gazella* sp., *Hipparion crassum*, *Hyaena pyrenaica*, *Mimomys occitanus*, *Ochotonoides* sp. (Van de Weerd *et al.* 1982, Benda *et al.* 1977). *Hipparion crassum* is referred to "Plesiohipparion" *crassum* by Bernor *et al.* 1996a.



**Dytiko 1,2,3**

MN 13 (Koufos 1989)

*Adcrocuta eximia*, *Anomalomys* cf. *rudabanyensis*, *Bohlinia attica*, *Choerolophodon pentelicus*, *Cremohipparion matthewi*, *Cremohipparion mediterraneum*, *Cremohipparion periafricanum*, *Dorcatherium puyhauberti*, *Gazella* sp., *Hispanodorcas orientalis*, *Hystrix primigenia*, *Mesopithecus pentelicus*, *Palaeoreas linder-mayeri*, *Palaeotragus roueni*, *Plesiogulo crassa*, *Pliocervus pentelici*, *Plioviverrops orbignyi*, *Prostrepsiceros* sp., *Protictitherium crassum*, *Protragelaphus theodori*, *Tragoportax gaudryi* (de Bonis et al. 1988, Koufos 1989, NOW 1995, Andrews et al. 1996, Sen 1996). *Mesopithecus pentelicus* is referred to *M. pentelicus* and/or *M. monspesulanus* by Andrews et al. 1996.

**Halmyropotamos**

MN 11 (NOW 1995)

*Adcrocuta eximia*, *Ancylotherium pentelicum*, *Cremohipparion mediterraneum*, *Deinotherium giganteum*, *Dicerorhinus 'orientalis'*, *Gazella gaudryi*, *Helladotherium duvernoyi*, *Hipparion 'koenigswaldi'*, *Hystrix primigenia*, *Machairodus giganteus*, *Mammut borsoni*, *Metailurus major*, *Metailurus parvulus*, *Microstonyx major*, *Palaeoreas linder-mayeri*, *Palaeoryx pallasii*, *Pliocervus pentelici*, *Pliohyrax graecus*, *Prostrepsiceros 'woodwardi'*, *Protragelaphus skouzesi*, *Simocyon primigenius*, *Tragoportax amalthea*, *Ursavus ehrenbergi* (Melentis 1969, Koufos 1989, NOW 1995).

**Kallithies**

MN 12 (partially after Sen et al. 1978, Sondaar et al. 1986)

*Byzantinia* sp., *Gazella deperdita*, *Gerbilus* sp., *Hipparion* sp., *Ictitherium orbignyi*, *Kowalskia* sp., *Machairodus aphanistus*, *Occitanomys neutrum*, *Paleoreas linder-mayeri*, *Paleotragus* sp., *Tragocerus amaltheus* (Sondaar et al. 1986).

**Megalo Emvolon - Karaburun**

MN 14-15 (Benda et al. 1979, de Bruijn 1984, Steffens et al. 1979).

*Dolichopithecus rusciniensis*, *Gazella bailloudi*, *Nyctereutes* sp., *Oryctolagus laynensis*, *Parabos makedonicus*, *Plesiohipparion longipes*, *Spalax odessanus*, *Sus minor*, *Trischizolagus maritsae* (Koufos & Pavlides 1988, Steffens et al. 1979, De Bonis et al. 1988, Bernor et al. 1996a)

**Kardia-Ptolemais I**

MN14-15 (NOW 1995, Steininger et al. 1996)

*Apodemus dominans*, *Castor fiber*, *Micromys steffensi*, *M. bendai*, *Mimomys davakosi*, *Occitanomys brailloni*, '?Plesiohipparion' *crassum*, *Prolagus michauxi*, *Promimomys insuliferus*, *Propotamochoerus provincialis*, *Rhagapodemus hautimagnensis* (Koufos et al., 1988, Van der Meulen & Van Kolfschoten 1986, Bernor et al. 1996a, Fejfar & Heinrich 1989).

**Kastellios, 1,2,3**

MN 10 (Steininger et al. 1996)

*Cricetulodon* cf. *sabadellensis*, *Dorcatherium* sp., *Hipparion* sp., *Muscardinus* sp., *Progonomys woelferi*, *P. cathalai*, *Spermophilinus* cf. *bredai* (De Bruijn & Zachariasse 1979).

**Limni 1,3,4**

MN 14-15 (Van der Meulen &amp; Van Kolfschoten 1986)

*Apodemus dominans* (1,3,4), *Mimomys occitanus* (3,4), *Myomimus maritsensis* (3,4) *Occitanomys neutrum* (1,3,4), *Promimomys insuliferus* (1) (Van der Meulen & Van Kolfschoten 1986).

**Maramena**

MN13 (Fahlbush 1996, De Bruijn et al. 1996, De Bruijn 1989)

*Adcrocuta eximia*, *Alilepus turolensis*, *Apodemus gudrunae*, *Choerolophodon pentelicus*, *Hypsocricetus* sp., *Dibolia dekkersi*, *Diceros heumayri*, *Helladotherium duvernoyi*,

*Hylopetes macrotis*, *Mustela* sp., *Myomimus neutrum*, *Pliopithecus michauxi*, *Tragocerus* (Daxner-Höck & Kolfschoten 1989).

**Maritsa**

MN14 (De Bruijn et al. 1996, Meulen & Van Kolfschoten 1986, Apodemus dominans, Calomyscus minutus, Cricetus lophidactylus, Keramidomys castoreus, mitivus, Myomimus anomalous, Pelomys sotirisi, Pseudomys rhagapodemus, Spermophilinus maritsae (De Bruijn et al. 1996, Meulen & Van Kolfschoten 1986, Heinrich 1989, Van der Meulen & Van Kolfschoten 1986).

**Pikermi-Megakriton**

MN12 (partially after Steininger et al. 1996, Aceratherium imitatum, Ancylotherium pallasii, Bohlinia speciosa, Choerolophodon mediterraneum, Deinotherium giganteum, dubia, 'Dicerorhinus', Enhydriodon latidens, sp., Gazella capriensis, Helladotherium duvernoyi, Hipparion prosubafricanum, 'Hippotherium' bredai, ca, Hyaenotherium, rinum, Indarctos, Machairodus giganteus, Martes woodwardi, Metailurus major, Microstonyx erythronomus, monacensis, Oioceros linder-mayeri, Palaeotragus roueni, Palaeotragus



**raburun**

1979, de Bruijn  
9).

*asis*, *Gazella*  
*..*, *Oryctolagus*  
*donicus*,  
*;*, *Spalax odessanus*,  
*s maritsae* (Koufos  
*is et al.* 1979, De  
*r et al.* 1996a)

Steininger *et al.*

*stor fiber*, *Micromys*  
*iomys davakosi*,  
*Plesiohipparion*  
*uxi*, *Promimomys*  
*oeris provincialis*,  
*mensis* (Koufos *et*  
*n & Van Kolfschoten*  
*a*, Fejfar & Heinrich

1996)  
*lensis*, *Dorcatherium*  
*ardinus* sp.,  
*cathalai*,  
*i* (De Bruijn &

len & Van

,4), *Mimomys occi-*  
*aritsensis* (3,4)  
3,4), *Promimomys*  
*Meulen & Van*

de Bruijn *et al.* 1996,

*is turolensis*,  
*erolophodon pente-*  
*Dibolia dekkersi*,  
*litherium duvernoyi*,

*Hylopetes macedoniensis*, *Kowalskia browni*,  
*Mustela* sp., *Myomimus* sp., *Occitanomys*  
*neutrum*, *Pliopetaurista dehneli*, *Prolagus*  
*michauxi*, *Tragelaphus* sp.  
(Daxner-Höck 1992, Van der Meulen & Van  
Kolfschoten 1986, Doukas 1988, De Bruijn  
1989).

**Maritsa**

MN14 (De Bruijn *et al.* 1996, Van der  
Meulen & Van Kolfschoten 1986)  
*Apodemus dominans*, *Atlantoxerus rhodius*,  
*Calomyscus minor*, *Castillomys crusafonti*,  
*Cricetus lophidens*, *Episoriculus gibberodon*,  
*Keramidomys carpathicus*, *Mesocricetus pri-*  
*mitivus*, *Myomimus maritsensis*, *Paraethomys*  
*anomalus*, *Pelomys europaeus*, *Pliospalax*  
*sotirisi*, *Pseudomeriones rhodius*,  
*Rhagopodemus vanderweardi*,  
*Spermophilinus giganteus*, *Trischizolagus*  
*maritsae* (De Bruijn *et al.* 1970, Van der  
Meulen & Van Kolfschoten 1986, Fejfar &  
Heinrich 1989, Agusti 1989).

**Pikermi-Megalo Rema**

MN12 (partially after Bernor *et al.* 1996b and  
Steininger *et al.* 1996)  
*Aceratherium incisivum*, *Adcrocuta eximia*,  
*Ancylotherium pentelicum*, *Bohlinia attica*,  
*Bohlinia speciosa*, *Ceratotherium neumayri*,  
*Choerolophodon pentelicus*, *Cremohipparion*  
*mediterraneum*, *Cremohipparion* aff. *matthe-*  
*wi*, *Deinotherium giganteum*, *Desmanella*  
*dubia*, *'Dicerorhinus' schleiermachers*,  
*Enhydriodon laticeps*, *Felis attica*, *Galerix*  
*sp.*, *Gazella capricornis*, *Graecoryx valen-*  
*ciennesi*, *Helladotherium duvernoyi*,  
*Hipparion prostylum*, *Hipparion gettyi*,  
*'Hippotherium' brachypus*, *Hyaenictis grae-*  
*ca*, *Hyaenotherium wongii*, *Ictitherium viver-*  
*rinum*, *Indarctos atticus*, *Lycyaena chaeretis*,  
*Machairodus giganteus*, *Mammuth borsoni*,  
*Martes woodwardi*, *Mesopithecus pentelicus*,  
*Metailurus major*, *Metailurus parvulus*,  
*Microstonyx erymanthius*, *Miotragocerus*  
*monacensis*, *Oioceros rothii*, *Palaeoreas lin-*  
*dermayeri*, *Palaeoryx pallasi*, *Palaeotragus*  
*roueni*, *Palaeotragus coelophrys*,

*Parapodemus gaudryi*, *Plesiogulo* sp.,  
*Pliocervus pentelici*, *Pliohyrax graecus*,  
*Plioviverrops orbignyi*, *Promeles palaeattica*,  
*Promephitis lartetii*, *Prostrepsiceros rotundi-*  
*cornis*, *Protoryx carolinae*, *Protragelaphus*  
*skouzesi*, *Schizogalerix moedlingensis*,  
*Simocyon primigenius*, *Sinictis pentelici*,  
*Sporadotragus parvidens*, *Stegotetrabelodon*  
*grandincisivus*, *Tragoportax amalthea*  
(Bernor *et al.* 1996b, Symeonidis *et al.*  
1979).

**Pikermi-Chomateri**

MN12 (Bernor *et al.* 1996c)  
*Aceratherium* sp., *Alilepus* sp., *Byzantinia*  
*pikermiensis*, *Chalicotherium* sp.,  
*Choerolophodon pentelicus*, *Cremohipparion*  
*mediterraneum*, *Desmanella dubia*, *Galerix*  
*moedlingensis*, *G. atticus*, *Gazella depertita*,  
*Hystrix primigenia*, *Kowalskia* aff. *lavocati*,  
*Mesopithecus pentelici*, *Microstonyx major*,  
*Muscardinus* sp., *Myomimus* cf. *dehmi*,  
*Occitanomys provocator*, *Parapodemus*  
*gaudryi*, *Pliocervus pentelici*, *Prolagus* cf.  
*crusafonti*, *Tragocerus amaltheus* (Bernor *et*  
*al.* 1996b, NOW 1995, De Bruijn 1976,  
Lopez Martinez 1976, Rümke 1976, Marinos  
& Symeonidis 1972).

**Prochoma I**

MN11 (Steininger *et al.* 1996)  
*Adcrocuta eximia*, *Choerolophodon*  
*pentelicus*, *Cremohipparion macedonicum*,  
*Gazella* sp., *Helladotherium duvernoyi*,  
*Hipparion dietrichi*, *Ictitherium* sp.,  
*Microstonyx* sp., *Nisidorcas planicornis*,  
*Plioviverrops orbignyi*, *Prostrepsiceros*  
*zitteli*, *Tragoportax rugosifrons* (NOW 1995,  
Kontopoulou *et al.* 1992, Koufos 1989).

**Pyrgos**

MN10/12 (NOW 1995, Andrews *et al.* 1996)  
*Bohlinia attica*, *Cervus* sp., *Equus* cf. *stehlini*,  
*E. stenonis*, *Felis issiodorensis*, *Gazellospira*  
*torticornis*, *Graecopithecus freybergi*,  
*Helladotherium duvernoyi*, *'Jordanomys major'*,  
*Leptobos* sp., *Tragoportax amalthea* (Van der  
Meulen & Van Kolfschoten 1986, NOW 1995).



**Ravin de la Pluie**

MN10 (Steinger *et al.* 1996)  
*Adcrocuta eximia*, *Bohlinia attica*,  
*Choerolophodon pentelicus*, *Cremohipparion*  
*macedonicum*, *Decennatherium macedoniae*,  
*Graecopithecus freybergi*, *Hippotherium pri-*  
*migenium*, *Mesembriacrus melentisi*,  
*Palaeotragus coelophrys*, *P. roueni*,  
*Plioviverrops orbignyi*, *Progonomys catalai*,  
*Prostrepsiceros vallesiensis*, *Protictitherium*  
*gaillardi*, *Samotragus praecursor* (Koufos  
 1989, De Bonis *et al.* 1988, NOW 1995,  
 Bernor *et al.* 1996a).

**Ravin de Zouaves I**

MN10 (NOW 1995)  
*Adcrocuta eximia*, *Choerolophodon penteli-*  
*cus*, *Cremohipparion macedonicum*,  
*Helladotherium duvernoyi*, *Ictitherium sp.*,  
*Mesembriacrus melentisi*, *Ouzocerus graci-*  
*lis*, *Samotragus praecursor* (Koufos 1989,  
 Bernor *et al.* 1996a).

**Ravin de Zouaves 5**

MN11 (Steinger *et al.* 1996)  
*Adcrocuta eximia*, *Chasmaporthetes bonisi*,  
*Choerolophodon pentelici*, *Cremohipparion*  
*macedonicum*, *Cremohipparion proboscide-*  
*um*, *Dicerorhinus orientalis*, *Gazella sp.*,  
*Helladotherium duvernoyi*, *Hipparion dietri-*  
*chi*, *Hyaenotherium wongii*, *Ictitherium viver-*  
*rinum*, *Mammot borsoni*, *Mesopithecus pente-*  
*licus*, *Microstonyx sp.*, *Nisidorcas planicor-*  
*nis*, *Palaeoreas zouavei*, *Postpotamochoerus*  
*hyotherioides*, *Prostrepsiceros rotundicornis*,  
*Prostrepsiceros zitteli*, *Tragoportax rugosi-*  
*frons*, *Zygodon tapiroides* (Andrews *et*  
*al.* 1996, Werdelin & Solounias 1996, Bernor  
*et al.* 1996a, Koufos 1989).

**Rema Marmara**

MN13/14 (Benda & Meulenkamp 1990)  
*Micromys bendai*, *Occitanomys neutrum*, *O.*  
*brailloni*, *Parapodemus gaudryi*, *Prolagus*  
*michauxi* (de Bruijn 1989)

**Samos - Old Mill Beds**

MN11 (Bernor *et al.* 1996b)

*Cremohipparion mediterraneum*, *Gazella*  
*capricornis/deperdita*, *Hipparion gettyi*, *H.*  
*cf. prostylum*, *?Microstonyx erymanthius*,  
*Samotherium boissieri*, *Sporadotragus*  
*parvidens* (Bernor *et al.* 1996b)

**Samos - White Sands**

MN12 (Bernor *et al.* 1996b)  
*Adcrocuta eximia*, *Bohlinia attica*,  
*Ceratotherium neumayri*, *Chilotherium sami-*  
*um*, *Cremohipparion nikosi*, *Criotherium*  
*argalioides*, *Gazella capricornis/deperdita*,  
*Hyaenotherium wongii*, *'Hippotherium'*  
*giganteum*, *Ictitherium viverrinum*,  
*?Microstonyx erymanthius*, *Pachytragus cras-*  
*sicornis*, *P. laticeps*, *P. quadricornis*,  
*Palaeoreas lindermayeri*, *Palaeoryx pallasi*,  
*Palaeotragus coelophrys*, *Pseudotragus*  
*capricornis*, *Samotherium sp.*, *Sporadotragus*  
*parvidens*, *Tragoportax rugosifrons* (Bernor  
*et al.* 1996b).

**Samos - Main Bone Beds**

MN12 (Bernor *et al.* 1996b)  
*Adcrocuta eximia*, *Ancylotherium pentelicum*,  
*Belbus beaumonti*, *Byzantinia hellenicus*,  
*Ceratotherium neumayri*, *Chilotherium*  
*samium*, *Choerolophodon pentelicus*,  
*Cremohipparion matthewi*, *C. proboscideum*,  
*Criotherium argalioides*, *Deinotherium*  
*giganteum*, *'Dicerorhinus' schleiermayeri*,  
*Felis attica*, *Gazella capricornis/deperdita*,  
*Graecoryx valenciennesi*, *Helladotherium*  
*duvernoyi*, *Hipparion dietrichi*,  
*Hyaenotherium wongii*, *Hystrix primigenia*,  
*Ictitherium viverrinum*, *Indarctos atticus*,  
*Lycyaena chaeretis*, *Machairodus giganteus*,  
*Mammot borsoni*, *Metailurus parvulus*,  
*Microstonyx erymanthius*, *Miotragocerus*  
*monacensis*, *Muntiacus sp.*, *Occitanomys*  
*provocator*, *Oioceros wegneri*, *Orycteropus*  
*gaudryi*, *Pachytragus crassicornis*, *P.*  
*laticeps*, *P. houtumschindleri*, *Palaeoryx pal-*  
*lasi*, *Paleotragus rounei*, *Parataxidea pola-*  
*ki/maraghana*, *Pliocervus pentelici*,  
*Pliohyrax graecus*, *Pliospalax sotirisi*,  
*Plioviverrops orbignyi*, *Promeles paleatica*,  
*Promephitis lartetii*, *Prostrepsiceros*

*rotundicornis*, *Pro-*  
*Pseudomeriones p-*  
*capricornis*, *Sam-*  
*Samonycteris maj-*  
*Schizogalerix attic-*  
*Stegotetabelodon*  
*Tragoportax amal-*  
*rugosifrons*, *Ursav-*  
 1996b).

**Vathylakkos**

MN12/13 (NOW 1995)  
*Bohlinia attica*, *Ce-*  
*Choerolophodon pe-*  
*macedonicum*, *Dor-*  
*Gazella sp.*, *Hippar-*  
*Hyaenotherium won-*  
*num*, *Microstonyx m-*  
*licus*, *Nisidorcas pla-*  
*dermayeri*, *Plessiogr-*  
*orbignyi*, *Prostrepsic-*  
*boissieri*, *Tragoporta-*  
*al.* 1996a, Koufos 1996).

The faunas were subjected to cluster analysis and statistics of cluster analysis. The goal of this test is to determine the degree to which these Greek Neogene faunas are separated into a Post-Messinian group. The degree of separation was estimated by the method of Cheetham & Hazel (1976) before and after the Messinian. A distance matrix of correlations was computed between all 23 fossil mammal faunas. The method of Cheetham & Hazel (1976) was used to produce a distance matrix for the cluster analysis. The formula is:  $C/N_{min}$ , where  $C$  is the number of common taxa between two faunas and  $N_{min}$  is the size of the smaller fauna. Cheetham & Hazel (1976) argued that it showed good correlation when the size of the fauna was large. Large sample vari-



*iterraneum*, *Gazella*  
*hipparion gettyi*, *H.*  
*stonyx erymanthius*,  
*H. i.*, *Sporadotragus*  
*al.* 1996b)

#### ids

1996b)  
*hlinia attica*,  
*Chilotherium sami-*  
*nikosi*, *Criotherium*  
*apricornis/deperdita*,  
*Hippotherium*  
*viverrinum*,  
*Chilotherium*, *Pachytragus cras-*  
*quadricornis*,  
*Chilotherium*, *Palaeoryx pallasi*,  
*Chilotherium*, *Pseudotragus*  
*sp.*, *Sporadotragus*  
*x rugosifrons* (Bernor

#### Beds

1996b)  
*Chilotherium pentelicum*,  
*Chilotherium hellenicus*,  
*Chilotherium*  
*pentelicum*,  
*Chilotherium*, *C. proboscideum*,  
*Chilotherium*  
*schleiermacheri*,  
*Chilotherium*, *Chilotherium*  
*apricornis/deperdita*,  
*Chilotherium*, *Helledotherium*  
*dietrichi*,  
*Hystrix primigenia*,  
*Indarctos atticus*,  
*Chilotherium giganteus*,  
*Chilotherium parvulus*,  
*Chilotherium*, *Miotragocerus*  
*sp.*, *Occitanomys*  
*egneri*, *Orycteropus*  
*rassicornis*, *P.*  
*ndleri*, *Palaeoryx pal-*  
*i*, *Parataxidea pola-*  
*us pentelici*,  
*spalax sotirisi*,  
*Promeles paleatica*,  
*Prostrepsiceros*

*rotundicornis*, *Protragelaphus skouzesi*,  
*Pseudomeriones pythagorasi*, *Pseudotragus*  
*capricornis*, *Samokeros minotaurus*,  
*Samonycteris majori*, *Samotherium sp.*,  
*Schizogalerix atticus*, *Spermophilinus bredai*,  
*Stegotetrabelodon grandincisivus*,  
*Tragoportax amalthea*, *T. curvicornis*, *T.*  
*rugosifrons*, *Ursavus depereti* (Bernor *et al.*  
 1996b).

#### Vathylakkos

MN12/13 (NOW 1995)

*Bohlinia attica*, *Ceratotherium neumayri*,  
*Choerolophodon pentelici*, *Cremohipparion*  
*macedonicum*, *Dorcatherium puyhauberti*,  
*Gazella sp.*, *Hipparion dietrichi*,  
*Hyaenotherium wongii*, *Ichtherium viverri-*  
*num*, *Microstonyx major*, *Mesopithecus pente-*  
*licus*, *Nisidorcas planicornis*, *Palaeoreas lin-*  
*dermayeri*, *Plessiogulo crassa*, *Plioviverrops*  
*orbigny*, *Prostrepsiceros zitteli*, *Samotherium*  
*boissieri*, *Tragoportax rugosifrons* (Bernor *et al.*  
 1996a, Koufos 1989, Werdelin *et al.*  
 1996).

The faunas were subjected to the multivariate statistics of cluster analysis for detecting natural groupings in the data. The primary goal of this test is the estimation of the degree these Greek Neogene mammal faunas are separated into a Pre-Messinian and a Post-Messinian group. It is a gross quantitative estimation of how different the faunas are before and after the Messinian. First, a symmetrical matrix of correlation coefficients between all 23 fossil mammal faunal assemblages was computed. Simpson's formula for Faunal Resemblance Index (SRI, Simpson 1960), was used to produce this input data matrix for the cluster analysis. The SRI formula is:  $C/N_{\min}$ , where  $C$  is the number of common taxa between two faunas, and  $N_{\min}$  the size of the smaller of the two faunas. Cheetham & Hazel (1969) compared the SRI correlation formula with several others, and argued that it showed greater consistency when the size of the faunas vary considerably. Large sample variation is indeed the case

with the fossil faunal assemblages in this study. SRI accomplishes this by dividing the number of common taxa between two faunas, by the number of the smaller of the two samples, thus maximizing similarities between the faunas than differences, as is the case with, among others, the Jaccard formula. [For further discussion on fossil mammal faunal correlation coefficients, see Shuey *et al.* (1978) and Bernor & Pavlakis (1987)]. The statistical program Systat ver. 7 for Windows was used for the calculation and production of the faunal correlation matrix, as well as for the subsequent cluster analysis. The Join or hierarchical method of cluster analysis was used, in which the set of faunas is partitioned into sets of nested groups, with the most similar faunas nested first and closer (for details see Sokal & Sneath 1963). The output of the hierarchical method is a tree or dendrogram.

The pair cross correlation of SRI's was computed as 'distances' between two faunas. These distances are normalised to allow comparison of clustering across widely different SRI values. These pair cross correlation were produced by 4-distance metrics: Euclidean, 1-Gamma coefficient, 1-Pearson correlation coefficient, and Percent disagreement. The Euclidean distance uses the square root of the SRI correlation value of a pair of faunas (mean for more than one faunas in clusters). The Gamma option uses  $1-\gamma$ , where  $\gamma$  is the Goodman-Kruskal gamma correlation coefficient between two SRI's (pairs of faunas). The Pearson distance is calculated as  $1-p$ , where  $p$  is the Pearson product-moment correlation between two SRI values. The Percentage produces a distance index, which is the percentage of the difference of two SRI values. For more information see Hartigan (1975) and Sokal & Sneath (1963).

For each one of the four-distance metrics, the following linkage clustering methods were used to compute the distance of a cluster to another, in order to decide whether the two



should be merged, in a given step:

- Single: the distance between the two closest members in separate clusters is taken as the distance between the two clusters. It produces long, stringy clusters.
- Complete: it uses the most distant pair of faunas in two clusters to compute between-cluster distances. It tends to produce compact clusters.
- Centroid: it uses the average distance value of all faunas in a cluster as a reference point for distances to other clusters.
- Average: it averages all distances between pairs in two clusters to decide how far apart these clusters are.
- Median: it calculates the median of all distances between pairs in two clusters to decide how far apart these clusters are.
- Finally, the merging of clusters is decided by the Ward method (Ward 1963), i.e., by producing clusters with minimum variance.

The 23 faunas were also subjected to the K-means clustering method. It assigned faunas to non-overlapping clusters. Two groups of faunas were selected for this study. It split the faunas into two groups by maximizing between clusters variation, relative to the variation within the two clusters (for details see Hartigan 1975). The faunal assemblages were not standardised or ranked in both Join and K-Means statistics. 50 iterations were done for the separation into the two clusters. The 23 mammal Neogene faunas were further analyzed in biochronological and paleoecological context. Specifically, the biochronological range of selected taxa was tabulated to show possible faunal turnover around Messinian times.

## RESULTS AND DISCUSSION

The K-means cluster analysis (less SRI variation within clusters than between clusters), produced the following two faunal groups: the first one consists of the Pikermi fauna from Megalo Rema (the main, classical

fauna) and the three Samos faunas (Main Bone Beds, Old Mill Beds and White Sands). The other group contains the rest of the faunas. This first result brings forward the Pikermi and Samos faunas as the reference Greek Neogene fossil mammal faunas. Main reason for this is the large size of the faunal samples. The Pikermi fauna contains 57 taxa, and the Samos (Main Bone Beds) 58, while the next numerous faunal sample has only 23 taxa (Halmyropotamos). An additional reason for this separation is related to taxonomic identification. Both faunas are the best studied and the most recently taxonomically updated. Adequate sample size, which approximates with statistical confidence the extinct animal population, and updated taxonomic identification of the faunal sample, are prime requirements for reconstruction of the paleontological record, biochronological or paleoecological, including that of the Greek Neogene.

The Join cluster analysis produced 26 dendrograms, as described in the methods. In 21 of these diagrams three major factors were detected to have been responsible for the production of clusters: faunal diversity and size, geography and age of the faunas. Only two main faunal groups were almost constantly produced. The main pattern is shown by the dendrogram of Figure 1. It is produced by the Euclidean distance and the minimum variance (Ward) clustering method. This clustering pattern will be described, as the basis for discussing three variations produced by the other dendrograms. One major grouping contains three nested clusters. Ravin, Vathylakos and Prochoma faunas comprise the one cluster, and Samos and Pikermi faunas belong to another cluster. Dytiko and Halmyropotamos are also part of this group. The sister group consists of the rest of the faunas in the study. The faunas of Ano Metochi, Ptolemais and Rema Marmara are nested first, and next cluster with Limni and Maritsa, with the Apollakia fauna outlayer. Additionally, Megalo Emvolo, Maramena, Pyrgos,

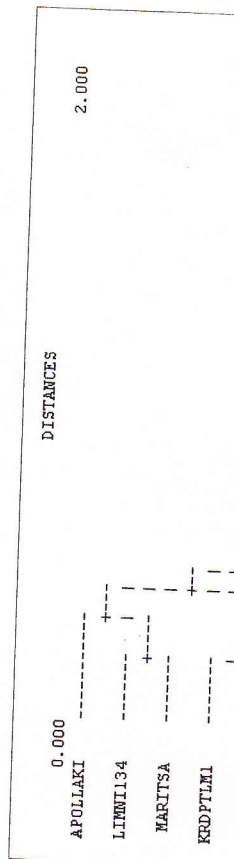


Figure 1 Cluster analysis tree using the distance method.

Kastellios and Kallithi in this group.

The former of the two groups is a solid set of Pikermi-Samos faunas of large size, taxonomically rich, of the Miocene, Upper Tortonian, Late Turolian Age, Mediterranean Neogene faunas. The latter were employed, in order to assess faunal diversity and large sample are decisive factors. The sample approximate the statistical analysis of geographical proximity that played key role in



os faunas (Main ls and White Sands). : the rest of the fau- gs forward the as as the reference ummal faunas. Main e size of the faunal na contains 57 taxa, ne Beds) 58, while l sample has only 23 An additional reason ted to taxonomic as are the best stu- ly taxonomically le size, which ical confidence the 1, and updated taxo- ne faunal sample, are econstruction of the iochronological or g that of the Greek

produced 26 den- n the methods. In 21 ajor factors were sponsible for the pro- al diversity and size, e faunas. Only two almost constantly ern is shown by the It is produced by the he minimum varianc e. This clustering , as the basis for dis- produced by the major grouping cons. Ravin, Vathylakos mprise the one clus- mi faunas belong to nd Halmyropotamos p. The sister group e faunas in the study. chi, Ptolemais and d first, and next aritsa, with the : Additionally, : ena, Pyrgos,

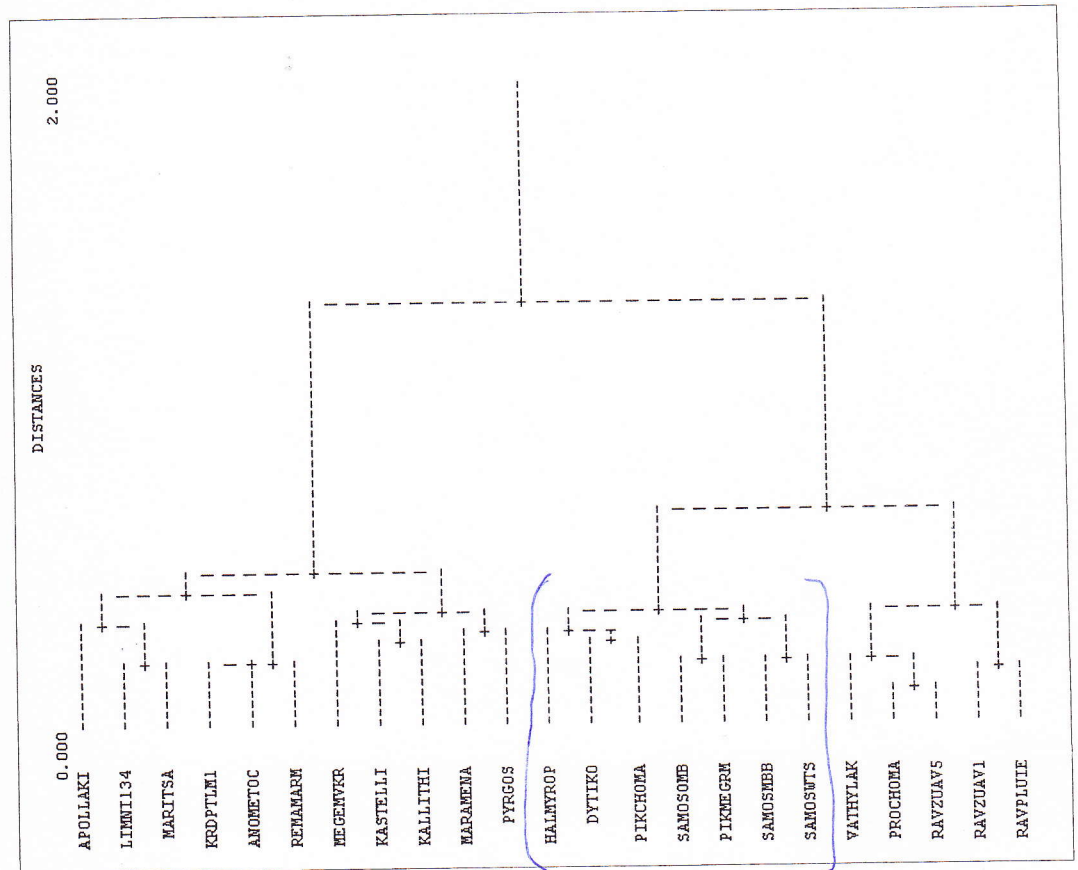


Figure 1 Cluster analysis tree diagram of Greek Neogene faunas studied. Distance metric is Euclidean distance. Ward minimum distance method.

Kastellios and Kallithies cluster together with in this group.

The former of the two major clusters is the solid set of Pikermi-Samos-Axios Valley, large size, taxonomically diverse, Late Miocene, Upper Tortonian-Messinian Stage, Late Turolian Age, MN 11-12, Greek mainland Neogene faunas. The following factors were employed, in order of importance: high faunal diversity and large size of the faunal sample are decisive factors. They make the sample approximate the population and make the statistical analysis reliable. Time and geographical proximity are additional factors that played key role in producing this cluste-

ring. Only Dytiko is younger than the other faunas. It belongs to zone MN11-12.

The second group of faunas is also solid, in terms that, with the exception of a couple of faunas, all cluster runs produce it. This grouping is the result of the high proportion of micromammals in the faunal samples. Time is also a decisive clustering factor. The faunas which belong to this cluster belong mostly to zone MN13 or younger. Only the set of Kastellios and Kallithies faunas are older. Geographic proximity is the next clustering factor (Strimon Basin - Ano Metochi, Maramena, Rema Marmara; Ptolemais; Thessaloniki - Megalo Emvolo; Rhodos).



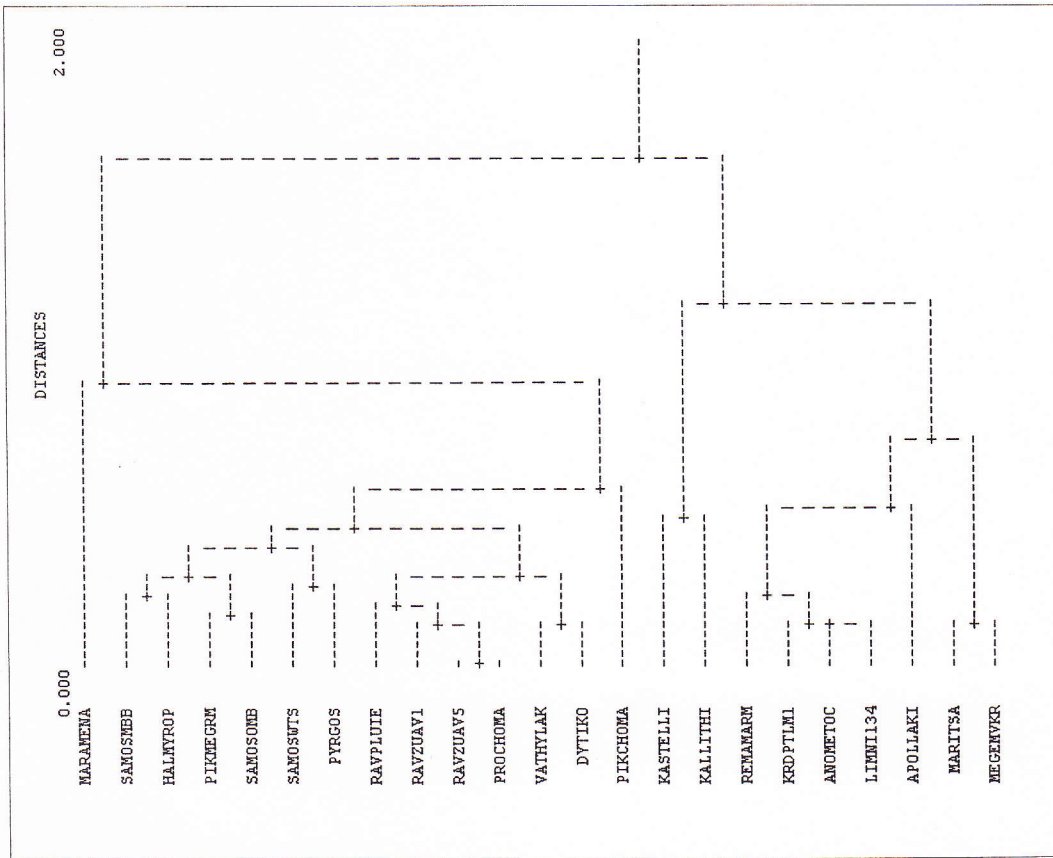


Figure 2 Cluster analysis tree diagram of Greek Neogene faunas studied. Distance metric is 1-Gamma coefficient. Average linkage method.

Pyrgos interchanges groups as outlayer in the other runs. It is not an adequately sampled and studied faunal assemblage. In Figure 2 we have the same division into two groups, with the Pyrgos fauna clustering with the MN11/12 faunas. In this dendrogram, Maramena fauna is an outlayer to the early age group. In Figure 3 we have the clearest separation of the faunas into a group dating less than or equal to MN 13 (pre-Messinian) and a group younger than MN13 (post-Messinian). The only exceptions are the Kastellios fauna, which clusters with the young faunas, and the Dytiko fauna, which clusters with the older. Finally, in Figure 4 we have a slightly different cluster arrangement, and perhaps the most realistic. While

the two pre- and post-Messinian basic faunal groupings are still distinct, the problematic faunas of the three previous patterns are outlayers to both major groupings. These five faunas are the oldest Kastellios (MN10), the Pyrgos fauna of uncertain age (MN10-12), and the Maramena, Kallithies and Megalo Emvolo faunas. In Figure 4, therefore, only the Dytiko fauna violates the clear-cut division of the 23 (or 18) faunas into a pre-Messinian and a post-Messinian group. Geographic proximity with the rest of the Axios Valley faunas played the decisive role in the Dytiko clustering.

Biased sampling of the true animal diversity in the extinct population, is a possible cause

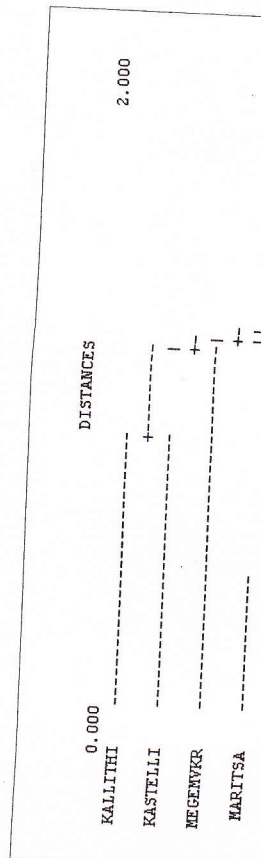
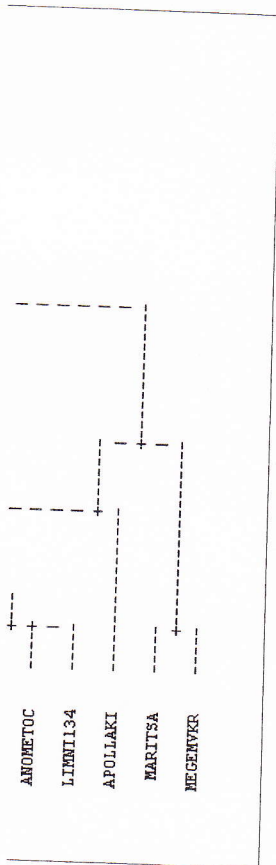


Figure 3 Cluster analysis tree diagram of Greek Neogene faunas studied. Distance metric is 1-Gamma coefficient. Complete linkage method.

of sampling error; an even in paleobiology. Sampling error excluded in the paleofaunal analysis. Beyond this factor and age proximity are the two major faunal clusters. Further investigate the effects on Greek mammal faunas, ranges of specific species orders have been constant in the MN Unit biochronological reference scale. Figures 5 to 11 show the biochronological range of 11 faunas. This is a recording of the presence of each species in the MN Unit





ma coefficient. Average linkage

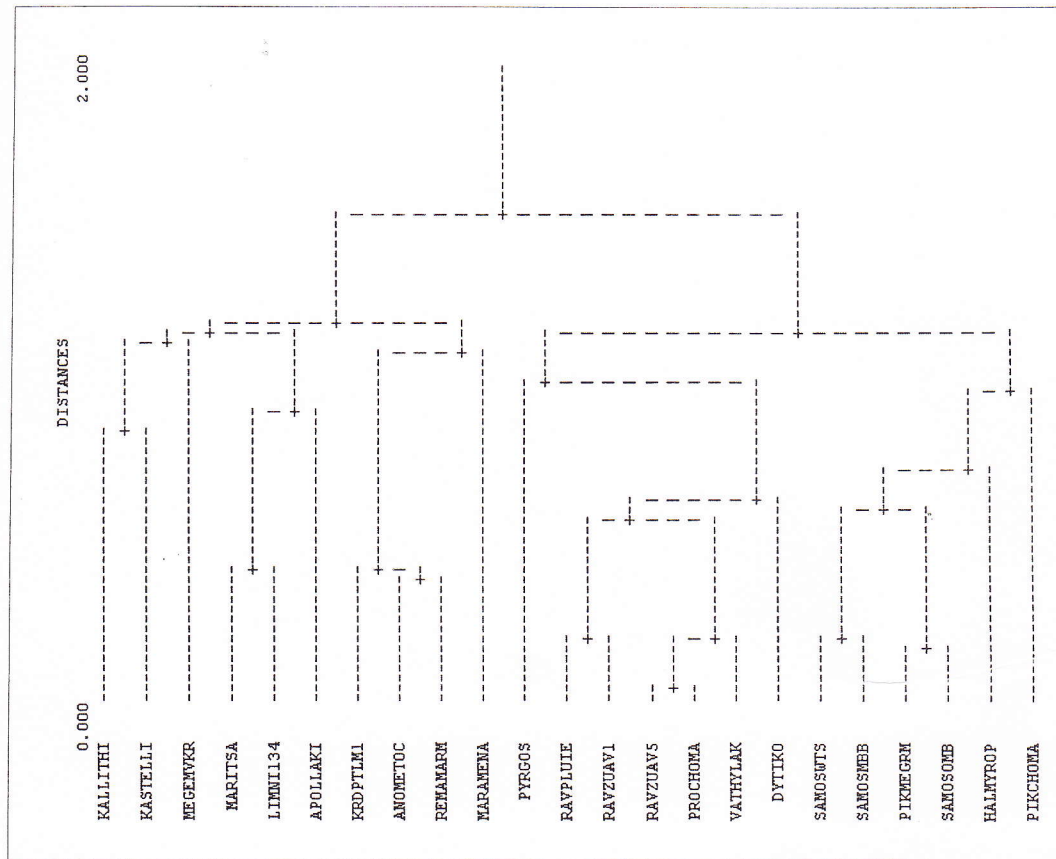


Figure 3 Cluster analysis tree diagram of Greek Neogene faunas studied. Distance metric is 1-Pearson correlation coefficient. Complete linkage method.

Messinian basic faunal  
 act, the problematic  
 ous patterns are out-  
 upings. These five  
 istellios (MN10), the  
 in age (MN10-12),  
 ithies and Megalo  
 re 4, therefore, only  
 s the clear-cut divi-  
 nas into a pre-  
 essinian group.  
 ith the rest of the  
 ved the decisive role

ue animal diversity  
 , is a possible cause

of sampling error; an ever-present problem in paleobiology. Sampling error cannot be excluded in the paleofaunas used in this cluster analysis. Beyond this factor, geographic and age proximity are the two factors causing the two major faunal clusters. In order to farther investigate the effects the Messinian had on Greek mammal faunas, biochronological ranges of specific species of major mammalian orders have been constructed, with the MN Unit biochronological system as a reference scale. Figures 5 to 11 tabulate the MN biochronological range of 196 species, present in the 23 Greek mammal Neogene faunas. This is a recording of the presence of each species in the MN Unit range 10 to 15

and not a species FAD and LAD in the fossil record. Filling-in was used if a taxon was present in the one MN Unit before and the one after the unit where the taxon was missing. The majority of the bovids in the 23 faunas belong to MN 12. The biochronological distribution of equids and rhinos, as well as that of carnivores, range mostly between MN 11 and 13. There is an apparent considerable number of species reduction at the onset of the Pliocene. That the environment changed around the Messinian, 7-4 My ago, and that this change was caused by a trend for colder and dryer climate worldwide, has been sufficiently documented. Potts (1998) provides a complete treatment of recent data used in



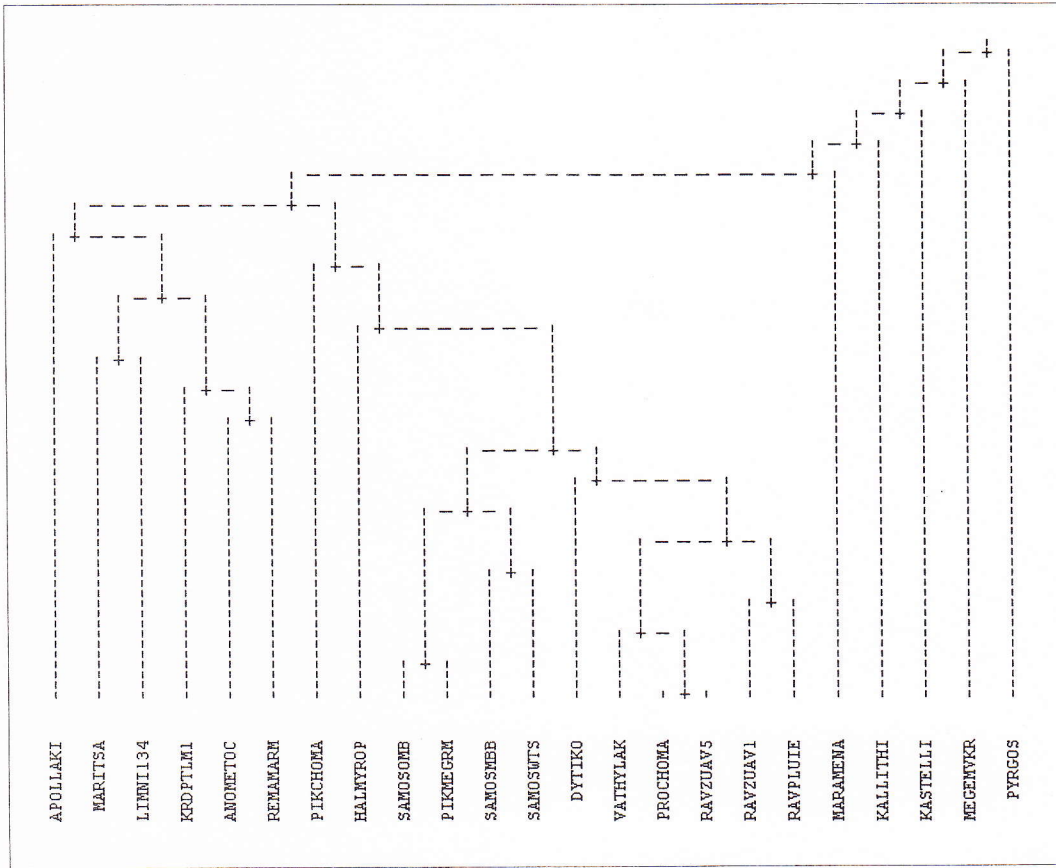


Figure 4 Cluster analysis tree diagram of Greek Neogene faunas studied. Distance metric is 1-Pearson correlation coefficient. Median linkage method.

paleoenvironmental reconstruction. Environments, however, always change. And, however low is the turn-out of mammals in the Pliocene, certainly there were mammals around. No study, to my knowledge, equates the effects of the Messinian 'Event' with the major effects of the bolide impact at the end of Cretaceous. The large-mammal distribution is shown in Figures 8-11, with many species not making it after the Messinian, and few new ones appearing. In addition to the known environmental changes after the Messinian mentioned above, this is also due to sampling error and to poor taxonomic identification for some faunal assemblages collected long ago.

Finally, looking at the micromammals (Figs. 5-7), their record in the Greek Neogene is better than that of the large mammals. Moreover, small mammals are environmental indicators. The disadvantage is that they can only tell the environment in a small area. The record of Insectivora is mostly pre-Messinian. *Blarinella* and *Crocidura* have a late presence in Apollakia. Squirrels of all three types are present (flying, tree and ground). The flying squirrel *Hylopetes* is present in Maramena (MN13), and *Tamias* is present in ? post-Messinian Ano Metochi (MN13-14). Most of the Cricetidae and Muridae do not generally support a single widespread dry or wet environment after the

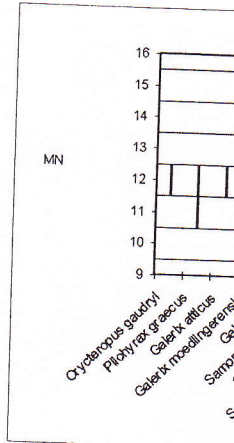


Figure 5 Biochronological range chart for studied Greek Neogene faunas.

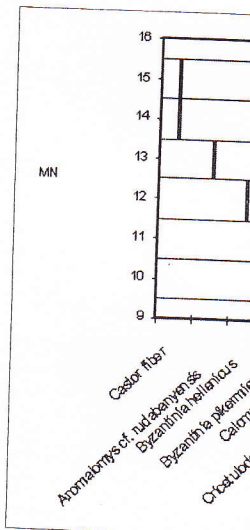
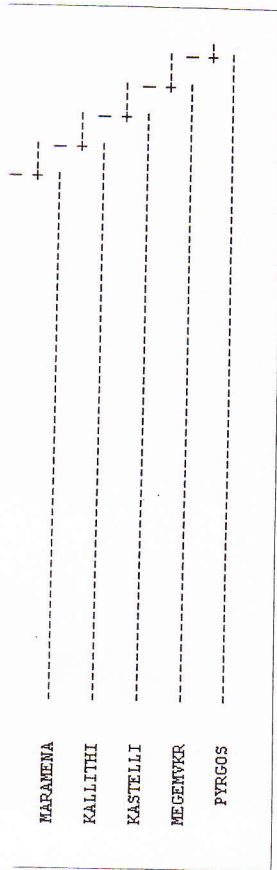


Figure 6 Biochronological range chart for micromammals.

Messinian. Instead, there were trees, as well as sandy ground, wet, as well as environments in the area before the Messinian. This is supported by botanical studies in the area (Velitzelos 1995). It is clear that the multidisciplinary reconstruction of the Messinian effect on the environment of the area is more complex than





Pearson correlation coefficient.

micromammals (Figs. 5 & 6). The Greek Neogene is a large mammal. The faunas are environmental and the change is that they can be found in a small area. The faunas are mostly pre-Messinian and *Crociodura* have a wide distribution. Squirrels of all kinds (flying, tree and ground squirrel *Hylopetes* is present (Fig. 13), and *Tamias* is present in the Messinian Ano Metochi and the Cricetidae and they support a single environment after the

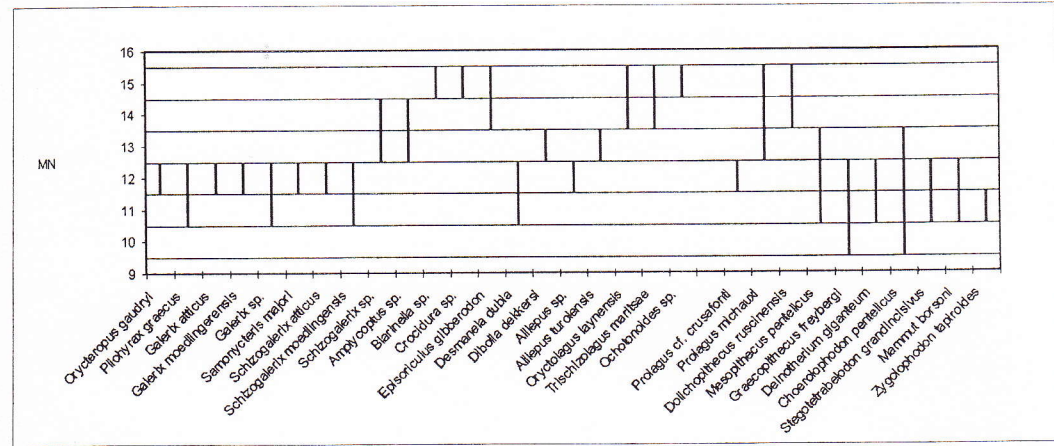


Figure 5 Biochronological range in MN Units of specific Insectivora, Lagomorpha, Primates and Proboscidea present in the studied Greek Neogene faunas.

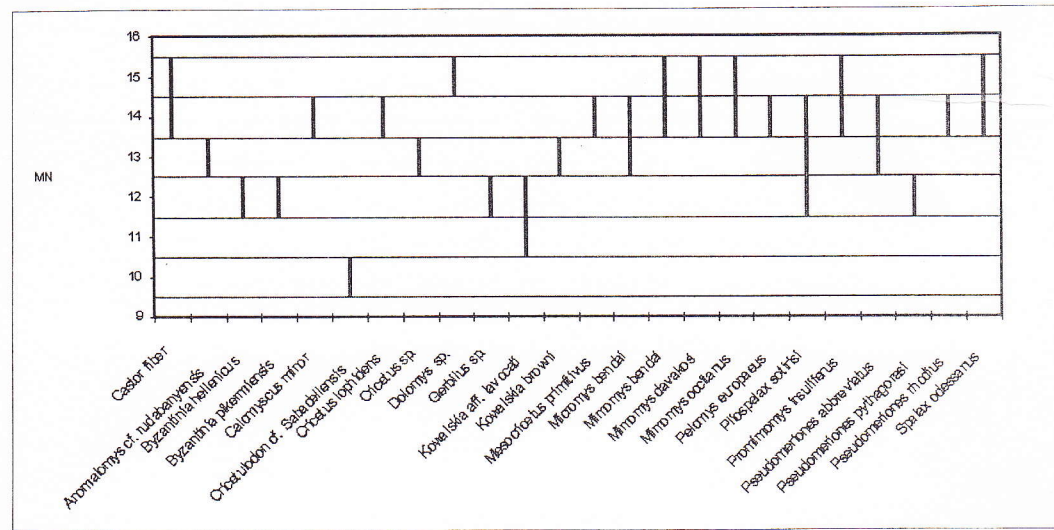


Figure 6 Biochronological range in MN Units of specific Cricetidae (Rodentia) present in the studied Greek Neogene faunas.

Messinian. Instead, the rodents tell us that there were trees, as well as open country, dry sandy ground, wet, as well as dry environments in the area before, during, and after the Messinian. This is supported also by paleobotanical studies in the Greek mainland (Velitzelos 1995). It is obvious today (due to the multidisciplinary research done) that the Messinian effect on the circum-Mediterranean area is more complex than was previously

believed. It is now known that it was not a single and short-lived event. The effects, therefore, to the mammalian faunas must also be far more complex than a direct simple effect on them by a unique, unidirectional trend of environmental change. More scientific data out of fieldwork and a study of paleontological museum collections work will further explain the Messinian phenomenon and its effects on the Greek Neogene mammal faunas.



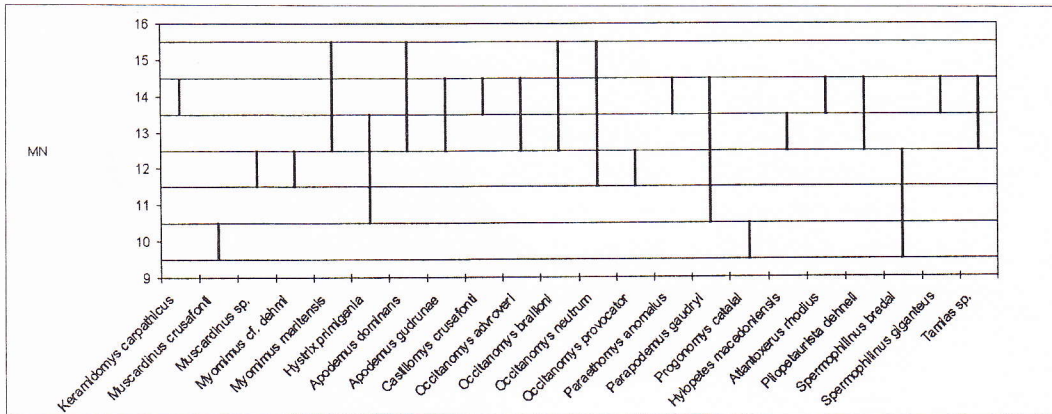


Figure 7 Biochronological range in MN Units of specific Muridae (Rodentia) present in the studied Greek Neogene faunas.

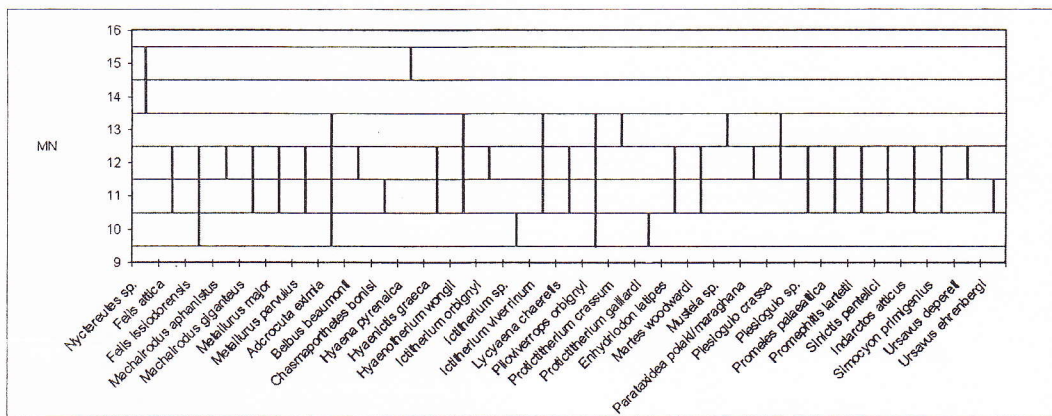


Figure 8 Biochronological range in MN Units of specific Carnivora present in the studied Greek Neogene faunas.

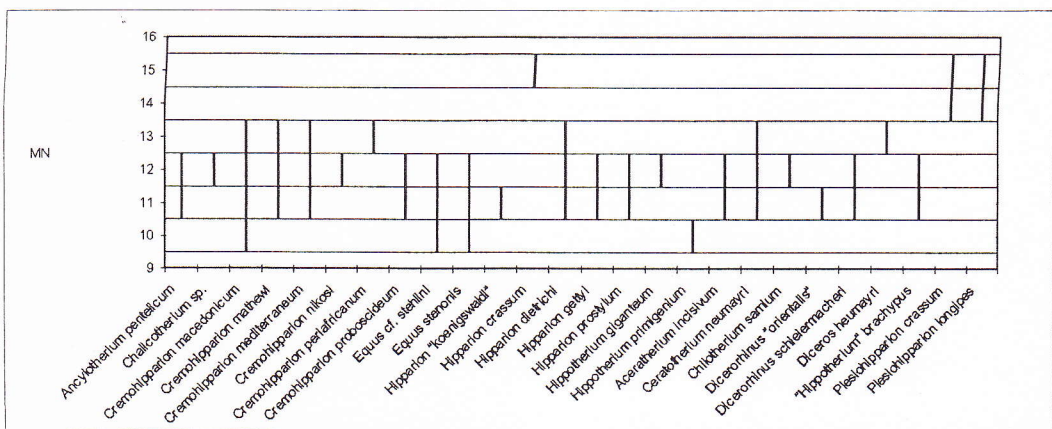


Figure 9 Biochronological range in MN Units of specific Perissodactyla present in the studied Greek Neogene faunas.

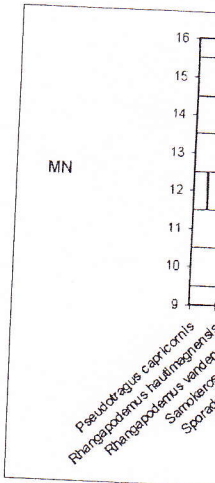


Figure 10 Biochronological range in MN Units of specific species present in the studied Greek Neogene faunas.

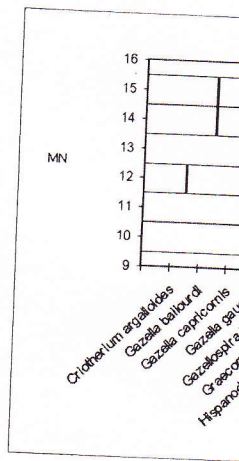


Figure 11 Biochronological range in MN Units of specific species present in the studied Greek Neogene faunas.

**ACKNOWLEDGEMENTS**

I thank the editors of this journal for their contribution to this contribution. I thank dr E. Velitzelos, University of Athens, Greece, for reviewing this paper. Dr. Symeonidis is thanked for his contribution in the early stages of this study. I thank the University of Helsinki, Finland, for providing me a 1995 version of the preliminary version of the International Geobiochronological biotic and climatic effects







## REFERENCES

- Agusti, J., 1989 - The Miocene Rodent successions in Eastern Spain: A zoogeographical appraisal - in: Lindsey, E., Fahlbusch, V. & Mein, P. (eds.) - European Neogene Mammal Chronology - New York: Plenum Press - NATO ASI Series A, Life Sciences 180: 375-404
- Andrews, P., Harrison, T., Delson, E., Bernor, L. & Martin, L. 1996 - Distribution and Biochronology of European and Southwest Asian Miocene Catarrhines - in: Bernor, R., Fahlbusch, V. & Mittmann, H. (eds.) - The Evolution of Western Eurasian Neogene Mammal Faunas - New York: Columbia University Press: 168-207
- Benda, L. & Meulenkamp, J., 1979 - Biostratigraphic correlations in the Eastern Mediterranean Neogene. Calibration of sporomorph associations, marine microfossil and mammal zones, marine and continental stages and the radiometric scale - Vth International Congress Mediterranean Neogene - Annales Géologiques Pays Hellenique, Tome Hors série 1979 (1): 61-70
- Benda, L. & Meulenkamp, J., 1990 - Biostratigraphic correlations in the Eastern Mediterranean Neogene. 9. Integrated biostratigraphic and chronostratigraphic scales - Newsletters of Stratigraphy 23: 1-10
- Benda, L., Meulenkamp, J., Van de Weerd, A., 1977 - Biostratigraphic correlations in the Eastern Mediterranean Neogene: Correlation between mammal, sporomorph and microfossil assemblages from the Upper Cenozoic of Rhodes, Greece - Newsletters of Stratigraphy 6: 117-30
- Berggren, W., Kent, D., Swisher III, C. & Aubry, M-P., 1995 - A revised Cenozoic Geochronology and Chronostratigraphy - in: Berggren, W., Kent, D., Aubry, P.-M. & Hardenbol, J. (eds.) - Geochronology, Time Scales and Global Stratigraphic Correlation - SEPM Special Publication 54: 129-212
- Bernor, R., Koufos, G., Woodburne, M. & Fortelius, M., 1996a - The evolutionary history and biochronology of European and Southwest Asian Late Miocene and Pliocene Hipparionine horses - in: Bernor, R., Fahlbusch, V. & Mittmann, H. (eds.) - The Evolution of Western Eurasian Neogene Mammal Faunas - New York: Columbia University Press: 307-338
- Bernor, R., Solounias, N., Swisher III, C. & Van Couvering J., 1996b - The correlation of three classical 'Pikermian' mammal faunas - Maragheh, Samos, and Pikermi - with the European MN Unit System - in: Bernor, R., Fahlbusch, V. & Mittmann, H. (eds.) - The Evolution of Western Eurasian Neogene Mammal Faunas - New York: Columbia University Press: 137-156
- Bernor, R., Fahlbusch, V., Andrews, P., De Bruijn, H., Fortelius, M., Rögl, F., Steininger, F. & Werdelin, L. 1996c - The evolution of Western Eurasian Neogene mammal faunas: A chronologic, systematic, biogeographic and paleoenvironmental synthesis - in: Bernor, R., Fahlbusch, V. & Mittmann, H. (eds.) - The Evolution of Western Eurasian Neogene Mammal Faunas - New York: Columbia University Press: 449-469
- Bernor, R. & Pavlakis, P., 1987 - Zoogeographic relations of the Sahabi large mammal fauna (Early Pliocene, Libya) - in: Boaz, N., El-Arnauti, A., Gaziry, W., De Heinzelin, J. & Dechant Boaz, D. (eds.) - Neogene Paleontology and Geology of Sahabi - New York: Alan Liss: 349-383
- Berry, J.C., 1995 - Faunal turnover and diversity in the terrestrial Neogene of Pakistan - in: Vrba, E., Denton, G., Partridge, T. & Burckle, L. (eds.) - Paleoclimate and Evolution, with Emphasis on Human Origins - New Haven: Yale University Press: 115-134
- Brain, C.K., 1981 - The evolution of man in Africa: Was it a consequence of Cenozoic cooling? - Annals of the Geological Society of South Africa 84: 1-19
- Butler, R., Lickorish, W., Grasso, M., Pedley H. & Ramberti, L., 1995 - Tectonics and sequence stratigraphy in Messinian basins, Sicily: Constrains on the initiation and termination of the Mediterranean salinity crisis - Bulletin Geological Society America 107: 425-439
- Cerling, T., Harris, J., MacFadden, B., Leakey, M., Quade, J., Eisenmann, V. & Ehleringer, R., 1997 - Global vegetation change through the Miocene/Pliocene boundary - Nature 389: 153-158
- Cheetham, A. & Hazel, J., 1969 - Binary (presence-absence) similarity coefficients - Journal of Paleontology 43 (5): 1130-1136
- Daxner-Höck, G., 1992 - Die Cricetinae aus dem Obermiozän von Maramena (Mazedonien, Nordgriechenland) - Paläontologische Zeitschrift 66: 331-367
- De Bonis, L., Bouvrain, G. & Koufos, G., 1988 - Late Miocene Mammal localities of the Lower Axios Valley (Macedonia, Greece) and their stratigraphic significance - Modern
- De Bruijn, H., 1976 - Va
- from Biotia, Attika a
- Proceedings Koninkl
- Wetenschappen B 79
- De Bruijn, H., 1984 - Re
- Microspalax odessan*
- Macedonia) and the f
- Koninklijke Nederlan
- 87: 417-424
- De Bruijn, H., 1989 - Sn
- Miocene to Lower Pli
- Part I. Rodentia and I
- Società Paleontologica
- De Bruijn, H., Van Dam,
- Fahlbusch, V. & Storck
- Murinae, endemic insu
- and Anatolia during th
- Pliocene - in: Bernor,
- H. (eds.) - The Evolut
- Neogene Mammal Fau
- University Press: 253-
- De Bruijn, H., Daams, R.,
- V., Ginsburg, L., Mein
- Report of the RCMNS
- mammals, Reizensburg
- Stratigraphy 26 (2/3):
- De Bruijn, H. & Zacharia
- of marine and continen
- reconsidered - Annales
- Helleniques, Tome hors
- De Bruijn, H., Dawson, M
- Pliocene Rodentia, Lag
- (Mammalia) from the is
- Proceedings Koninkjike
- Wetenschappen B 73 (5)
- Dechamps, R., 1987 - Xyl
- Sahabi Formation - in E
- A., Gaziry, W., De Heinz
- (eds.) - Neogene Paleor
- Sahabi - New York: Ala
- DeMonecal, P. & Bloemen
- climatic variability in su
- paleoenvironment of hor
- data-model approach - in
- Partridge, T. & Burckle,
- Evolution, With Emphas
- Haven: Yale University



- in the European MN Unit  
Fahlbusch, V. & Mittmann,  
of Western Eurasian  
s - New York: Columbia  
5
- irews, P., De Bruijn, H.,  
eininger, F. & Werdelin, L.  
Western Eurasian Neogene  
ologic, systematic,  
nvironmental synthesis - in:  
& Mittmann, H. (eds.) -  
Eurasian Neogene Mammal  
mbia University Press:
- 87 - Zoogeographic  
ge mammal fauna (Early  
z, N., El-Arnauti, A.,  
J. & Dechant Boaz, D.  
logy and Geology of Sahabi  
9-383
- nover and diversity in the  
istan - in: Vrba, E., Denton,  
e, L. (eds.) - Paleoclimate  
asis on Human Origins -  
ity Press: 115-134
- ition of man in Africa: Was  
oic cooling? - Annals of the  
th Africa 84: 1-19
- ssou, M., Pedley H. &  
nics and sequence  
asins, Sicily: Constrains  
nation of the Mediterranean  
ological Society America
- lden, B., Leakey, M.,  
z Ehleringer, R., 1997 -  
hrough the  
y - Nature 389: 153-158
- 9 - Binary (presence-  
ents - Journal of  
1136
- Cricetinae aus dem  
a (Mazedonien,  
itologische Zeitschrift 66:
- Koufos, G., 1988 - Late  
s of the Lower Axios  
) and their stratigraphic  
significance - Modern Geology 13: 141-147
- De Bruijn, H., 1976 - Vallesian and Turolian rodents  
from Biotia, Attika and Rhodes (Greece) -  
Proceedings Koninklijke Nederlandse Akademie  
Wetenschappen B 79: 361-384
- De Bruijn, H., 1984 - Remains of the mole-rat  
*Microspalax odessanus* from Karaburun (Greece,  
Macedonia) and the family Spalacidae - Proceedings  
Koninklijke Nederlandse Akademie Wetenschappen B  
87: 417-424
- De Bruijn, H., 1989 - Smaller mammals from the Upper  
Miocene to Lower Pliocene of Strimon basin, Greece.  
Part 1. Rodentia and Lagomorpha - Bolletino della  
Società Paleontologica Italiana 28 (2-3): 189-195
- De Bruijn, H., Van Dam, J., Daxner-Höck, G.,  
Fahlbusch, V. & Storch, G., 1996 - The genera of the  
Murinae, endemic insular forms excepted, of Europe  
and Anatolia during the Late Miocene and Early  
Pliocene - in: Bernor, R., Fahlbusch, V. & Mittmann,  
H. (eds.) - The Evolution of Western Eurasian  
Neogene Mammal Faunas - New York: Columbia  
University Press: 253-260
- De Bruijn, H., Daams, R., Daxner-Höck, G., Fahlbusch,  
V., Ginsburg, L., Mein, P. & Morales, J. 1992 -  
Report of the RCMNS working group on fossil  
mammals, Reisenburg, 1990 - Newsletters of  
Stratigraphy 26 (2/3): 65-118
- De Bruijn, H. & Zachariasse, W., 1979 - The correlation  
of marine and continental biozones of Kastellios Hill  
reconsidered - Annales Géologiques Pays  
Helleniques, Tome hors Série 1: 219-226
- De Bruijn, H., Dawson, M. & Mein, P., 1970 - Upper  
Pliocene Rodentia, Lagomorpha and Insectivora  
(Mammalia) from the isle of Rhodes (Greece) -  
Proceedings Koninklijke Nederlandse Akademie  
Wetenschappen B 73 (5): 535-584
- Dechamps, R., 1987 - Xylotomy of fossil wood from the  
Sahabi Formation - in Boaz, N., El-Arnauti,  
A., Gaziry, W., De Heinzelin, J., & Dechant Boaz, D.  
(eds.) - Neogene Paleontology and Geology of  
Sahabi - New York: Alan Liss: 37-42
- DeMonecal, P. & Bloemendal, J., 1995 - Plio-Pleistocene  
climatic variability in subtropical Africa and the  
paleoenvironment of hominid evolution: A combined  
data-model approach - in: Vrba, E., Denton, G.,  
Partridge, T. & Burckle, L. (eds.) - Paleoclimate and  
Evolution, With Emphasis on Human Origins - New  
Haven: Yale University Press: 262-288
- Doukas, C., 1988 - Palaeoecology of Neogene  
Insectivores from Greece - Modern Geology 13:  
159-161
- Doukas, K., 1989 - Smaller mammals from the Upper  
Miocene to Lower Pliocene of Strimon basin, Greece.  
Part 2. Insectivora - Bolletino della Società  
Paleontologica Italiana 28 (2-3): 213-216
- Fahlbusch, V., 1996 - Middle and Late Miocene common  
Cricetids and cricetids with prismatic teeth - in:  
Bernor, R., Fahlbusch, V. & Mittmann, H. (eds.) -  
The Evolution of Western Eurasian Neogene Mammal  
Faunas - New York: Columbia University Press:  
216-219
- Fejfar, O. & Heinrich, W., 1989. Muroid rodent  
biochronology of the Neogene and Quaternary in  
Europe - in: Lindsay, E., Fahlbusch, V. & Mein, P.  
(eds.) - European Neogene Mammal Chronology -  
NATO ASI Series A: Life Sciences - New York:  
Plenum Press 180: 91-118
- Gaudant, J., 1987 - A preliminary report on the  
Osteichthyan fish-fauna from the Upper Neogene of  
Sahabi, Libya - in: Boaz, N., El-Arnauti, A., Gaziry,  
W., De Heinzelin, J. & Dechant Boaz, D. (eds.) -  
Neogene Paleontology and Geology of Sahabi - New  
York: Alan Liss : 91-100
- Gaziry, A.W., 1987 - *Merycopotamus petrocchii*  
(Artiodactyla, Mammalia) from Sahabi, Libya. - in:  
Boaz, N., El-Arnauti, A., Gaziry, W., De Heinzelin,  
J. & Dechant Boaz, D. (eds.) - Neogene Paleontology  
and Geology of Sahabi - New York: Alan Liss :  
287-302
- Hartigan, A., 1975. Clustering Algorithms - New York:  
John Wiley
- Hill, A., 1995 - Faunal and environmental change in the  
Neogene of East Africa: Evidence from the Tugen  
Hills Sequence, Baringo District, Kenya - in: Vrba,  
E., Denton, G., Partridge, T. & Burckle, L. (eds.) -  
Paleoclimate and Evolution, with Emphasis on  
Human Origins - New Haven: Yale University Press:  
178-193
- Hilgen, F.J., Krijgsman, W., Langereis, C.G. & Lourens,  
L.J., 1997 - Breakthrough made in dating of the  
global record - Eos 78 (28): 285-289
- Hodell, D.A., Elstrom, K.M. & Kennett, J.P., 1986 -  
Latest Miocene benthic delta O<sup>18</sup> changes, global ice  
volume, sea level and the 'Messinian Salinity Crisis'.  
- Nature 320: 411-414
- Hodell, D.A., Benson, R.H., Kent, D.V., Boersma, A. &



- Rikic-El Bied, K., 1994 - Magnetostratigraphic, biostratigraphic and stable isotope stratigraphy of an Upper Miocene drill core from the Sale Briqueterie (northwestern Morocco): A high-resolution chronology for the Messinian Stage - *Paleoceanography* 9: 835-855
- Janis, C.M., 1993 - Tertiary mammal evolution in the context of changing climates, vegetation, and tectonic events - *Annual Review of Ecology and Systematics* 24: 467-500
- Kontopoulou, D., Sen, S., Koufos, G. & De Bonis, L., 1992 - Magneto- and bio-stratigraphy of the Late Miocene mammalian locality of Prochoma (Macedonia, Greece) - *Paleontologia i Evolucio* 4-25: 135-139
- Koufos, G., 1989 - The Hipparions of the Lower Axios Valley. Implications for the Neogene stratigraphy and the evolution of Hipparions - in: Lindsay, E., Fahlbusch, V. & Mein, P. (eds.) - *European Neogene Mammal Chronology - NATO ASI Series A: Life Sciences - New York: Plenum Press* 180: 321-338
- Koufos, G. & Pavlides S., 1988 - Correlation between the continental deposits of the Lower Axios Valley and Ptolemais Basin - *Bulletin Geological Society Greece* 20 (2): 9-19
- Lopez Martinez, N., 1976 - Lagomorpha from the Turolian of Pikermi (Greece) - *Proceedings Koninklijke Nederlandse Akademie Wetenschappen B* 79 (4): 235-244
- Marinos, G. & Symeonidis, N., 1972 - Neue Fossilfundstellen und neue Ergebnisse aus Pikermi (Attika) - *Bulletin Geological Society Greece* 9 (2): 160-176
- Melentis, J., 1969 - Studien über fossile vertebraten Griechenlands. 28. Die Pikermifauna von Halmiropotamos (Euboa, Griechenland). 2. Teil: Osteologie - *Annales Géologiques Pays Helléniques* 21: 1-217
- Moyá-Solá, S. & Agustí, J., 1989 - Movements and mammal successions in the Spanish Miocene - in: Lindsay, E., Fahlbusch, V. & Mein, P. (eds.) - *European Neogene Mammal Chronology - NATO ASI Series A: Life Sciences - New York: Plenum Press* 180: 357-373
- NOW (Neogene of Old World Project - M. Fortelius, Principal Investigator), 1995 - University of Helsinki, Finland
- Potts, R., 1998 - Environmental hypotheses of hominin evolution - *Yearbook of Physical Anthropology* 4: 93-136
- Rümke, C., 1976 - Insectivora from Pikermi and Biodrak (Greece) - *Proceedings Koninklijke Nederlandse Akademie Wetenschappen B* 79: 256-270
- Sen, S., 1996 - Late Miocene Hystricidae in Europe and Anatolia - in: Bernor, R., Fahlbusch, V. & Mittmann, H. (eds.) - *The Evolution of Western Eurasian Neogene Mammal Faunas - New York: Columbia University Press*: 264-265
- Sen, S., Sondaar, P. & Staesche, U., 1978 - The biostratigraphical applications of the genus *Hipparion* with special references to the Turkish representatives - *Proceedings Koninklijke Nederlandse Akademie Wetenschappen B* 81: 370-385
- Shuey, R., Brown, F., Eck, G. & Howell, F., 1978 - A statistical approach to temporal biostratigraphy - in: Bishop, W. (ed.) - *Geological Background to Fossil Man - Edinburgh: Scottish Academic Press*: 103-124
- Simpson, G., 1960 - Notes on the measurement of faunal resemblance - *American Journal of Science* 258 (a): 300 - 311
- Sokal, R. & Sneath, P., 1963 - *Principles of Numerical Taxonomy - San Francisco: W.H. Freeman & Co.*
- Sondaar, P., De Vos, J. & Dermitzakis, M., 1986 - Late Cenozoic faunal evolution and palaeogeography of the South Aegean island arc - *Modern Geology* 10: 249 - 259
- Steininger, F., Berggren, W., Kent, D., Bernor, R., Sen, S. & Agustí, J., 1996 - Circum-Mediterranean Neogene (Miocene and Pliocene) marine-continental chronologic correlations of European Mammal Units - in: Bernor, R., Fahlbusch, V. & Mittmann, H. (eds.) - *The Evolution of Western Eurasian Neogene Mammal Faunas - New York: Columbia University Press*: 7 - 46
- Stanley, D.J. & Wezel, F.-C., 1985 - *Geological Evolution of the Mediterranean Basin - Berlin: Springer Verlag*
- Steffens, P., De Bruijn, H., Meulenkamp, J. & Benda, L., 1979 - Field guide to the Neogene of Northern Greece - *Publications of the Department of Geology and Paleontology, University of Athens A* 35
- Symeonidis, N., Bachmayer, F. & Zapfe, H., 1979 - Field Guide to the Neogene of Attica - *Publications of the Department of Geology and Paleontology, University of Athens A* 33: 1-25
- Vai, B., Villa, M. & Colalongo, L., 1993 - First direct radiometric dating of the Messinian boundary - *Comptes Rendus de l'Académie des Sciences Paris* II 316: 1407-1414
- Van der Meulen, A. & Sen, S., 1996 - Review of the Late Miocene mammal faunas from the island of Rhodes - *Publications of the Società Geologica Italiana* 35: 1-10
- Van de Weerd, A., Renfrew, I., Sen, S., & Dermitzakis, M., 1996 - Pliocene mammals from the island of Rhodes (Greece) - *Proceedings Koninklijke Nederlandse Akademie Wetenschappen B* 99: 1-10
- Velitzelos, E., 1995 - The Messinian Salinity Crisis - *International Journal of Climatology* 15: 1-10
- Ward, H., 1963 - Hierarchical clustering: a new objective function - *Journal of the Royal Statistical Society B* 25: 44-51



f Physical Anthropology 4:

ora from Pikermi and Biodrak  
Koninklijke Nederlandse  
n B 79: 256-270

ie Hystricidae in Europe and  
, Fahlbusch, V. & Mittmann,  
1 of Western Eurasian  
is - New York: Columbia  
5

che, U., 1978 - The  
itions of the genus *Hipparion*  
o the Turkish representatives  
Nederlandse Akademie  
0-385

i. & Howell, F., 1978 - A  
nporal biostratigraphy - in:  
gical Background to Fossil  
h Academic Press: 103-124  
n the measurement of faunal  
Journal of Science 258 (a):

- Principles of Numerical  
o: W.H. Freeman & Co.  
rmitzakis, M., 1986 -  
lution and palaeogeography  
d arc - Modern Geology 10:

Kent, D., Bernor, R., Sen,  
rcum-Mediterranean  
iocene) marine-continental  
f European Mammal Units  
, V. & Mittmann, H. (eds.) -  
Eurasian Neogene  
ork: Columbia University

1985 - Geological  
mean Basin - Berlin:

eulenkamp, J. & Benda, L.,  
Neogene of Northern  
ie Department of Geology  
ity of Athens A 35  
& Zapfe, H., 1979 - Field  
Attica - Publications of the  
d Paleontology, University

, L., 1993 - First direct

radiometric dating of the Tortonian/Messinian  
boundary - Comptes Rendus Académie Sciences Paris  
II 316: 1407-1414

Van der Meulen, A. & Van Kolfschoten, T., 1986 -  
Review of the Late Turolian to Early Biharian  
mammal faunas from Greece and Turkey - Mem.  
Società Geologica Italiana 31: 201-211

Van de Weerd, A., Reumer, J.W.F. & De Vos, J., 1982 -  
Pliocene mammals from the Apolakkia Formation  
(Rhodes, Greece) - Proceedings Koninklijke  
Nederlandse Akademie Wetenschappen B 85: 89-112

Velitzelos, E., 1995 - The effects of the Mediterranean  
Messinian Salinity Crisis on the Neogene Floras of  
Greece - International Conference on the Biotic and  
Climatic Effects of the Messinian Event on the  
circum Mediterranean - Technical Programme &  
Abstracts: 66

Ward, H., 1963 - Hierarchical grouping to optimize an  
objective function - Journal of the American

Statistical Association 58: 236-244

Werdelin, L. & Solounias, N., 1996 - The evolutionary  
history of Hyaenas in Europe and Western Asia  
during the Miocene - in: Bernor, R., Fahlbusch, V. &  
Mittmann, H. (eds.) - The Evolution of Western  
Eurasian Neogene Mammal Faunas - New York:  
Columbia University Press: 290-306

Wolde Gabriel, G., White, T., Suaw, G., Renne, P., de  
Heinzelin, I., Hart, W & Heiken, G., 1994 -  
Ecological and temporal placement of Early Pliocene  
hominids at Aramis, Ethiopia - Nature 371: 330-333

Whybrow, P., Hill, A. & Sharikat Abu Zaby  
Lil-Amaliyat (eds.), 1999 - Fossil Vertebrates of  
Arabia with Emphasis on the Late Miocene Faunas,  
Geology and Paleoenvironments of Abu Dhabi - New  
Haven: Yale University Press

received 28 January 1999