

ΥΠΟΜΝΗΜΑ

LEGEND

ΤΕΤΑΡΤΟΓΕΝΗΣ

QUATERNARY

- Αλλuvιακά απόβλητα
Terraces with pebbles of local origin, usually not well rounded.
Fans of clastic debris of local origin, well distinguished by their conical shape.
Breccias compact, with a matrix of calcareous origin and cavernous structure.
Sands and clays in delta areas, partly with coastal sediment intercalations.
Reddish clay in ridges within extensive limestone areas.
Unindivided quaternary sediments and soils.

ΑΝΩΤΕΡΟ ΚΡΗΤΑΙΚΟ - ΠΑΛΑΙΟΚΑΙΝΟ

UPPER CRETACEOUS - PALEOCENE

- Ψηφός
The flysch sediments reach their largest extent in the region of Ligourion - Nea Epidaurou.
Παλιότερα ορεινή
The flysch sedimentation starts rather abruptly with transgression on 'Pantokrator' limestones, diabase - chert - tuffite formation, and upper cretaceous limestones.
Reddish-brown breccias and conglomerates with a matrix of calcareous origin and cavernous structure.
Reddish-brown breccias and conglomerates with a matrix of calcareous origin and cavernous structure.

ΑΝΩΤΕΡΟ ΚΡΗΤΑΙΚΟ - ΚΑΡΝΙΑΝ

UPPER CRETACEOUS - CARNIAN

- Αιολιόβελος
The flysch sediments reach their largest extent in the region of Ligourion - Nea Epidaurou.
Παλιότερα ορεινή
The flysch sedimentation starts rather abruptly with transgression on 'Pantokrator' limestones, diabase - chert - tuffite formation, and upper cretaceous limestones.

ΑΝΩΤΕΡΟ ΚΑΡΝΙΑΝ - ΑΝΩΤΕΡΟ ΑΣΙΑΤΙΚΟ

UPPER CARNIAN - UPPER ASIATIC

- Αιολιόβελος
The flysch sediments reach their largest extent in the region of Ligourion - Nea Epidaurou.
Παλιότερα ορεινή
The flysch sedimentation starts rather abruptly with transgression on 'Pantokrator' limestones, diabase - chert - tuffite formation, and upper cretaceous limestones.

ΚΑΡΝΙΑΝ - ΑΣΙΑΤΙΚΟ

CARNIAN - ASIATIC

- Αιολιόβελος
The flysch sediments reach their largest extent in the region of Ligourion - Nea Epidaurou.
Παλιότερα ορεινή
The flysch sedimentation starts rather abruptly with transgression on 'Pantokrator' limestones, diabase - chert - tuffite formation, and upper cretaceous limestones.

ΚΑΡΝΙΑΝ - ΑΣΙΑΤΙΚΟ

CARNIAN - ASIATIC

- Αιολιόβελος
The flysch sediments reach their largest extent in the region of Ligourion - Nea Epidaurou.
Παλιότερα ορεινή
The flysch sedimentation starts rather abruptly with transgression on 'Pantokrator' limestones, diabase - chert - tuffite formation, and upper cretaceous limestones.

ΚΑΡΝΙΑΝ - ΑΣΙΑΤΙΚΟ

CARNIAN - ASIATIC

- Αιολιόβελος
The flysch sediments reach their largest extent in the region of Ligourion - Nea Epidaurou.
Παλιότερα ορεινή
The flysch sedimentation starts rather abruptly with transgression on 'Pantokrator' limestones, diabase - chert - tuffite formation, and upper cretaceous limestones.

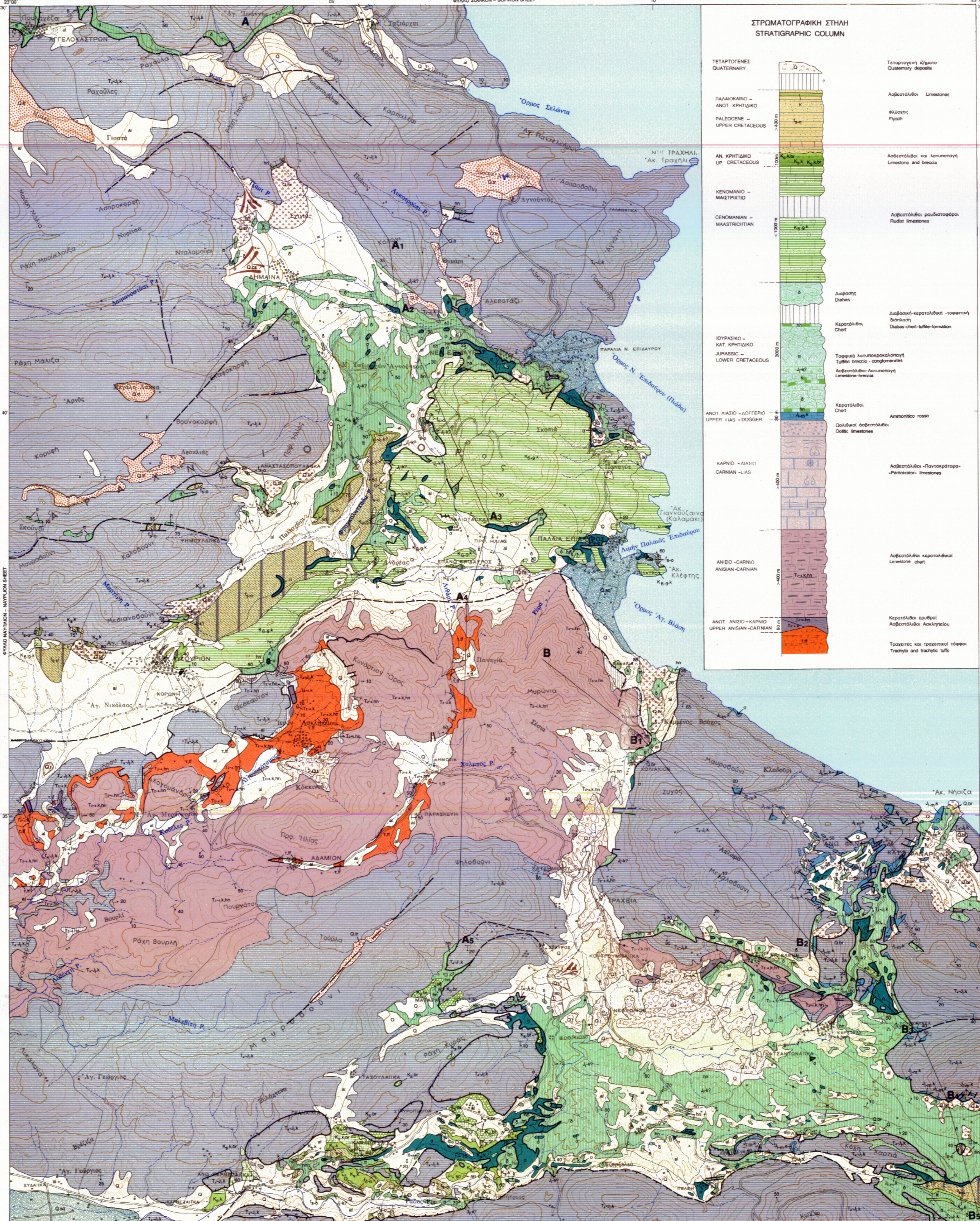
ΚΑΡΝΙΑΝ - ΑΣΙΑΤΙΚΟ

CARNIAN - ASIATIC

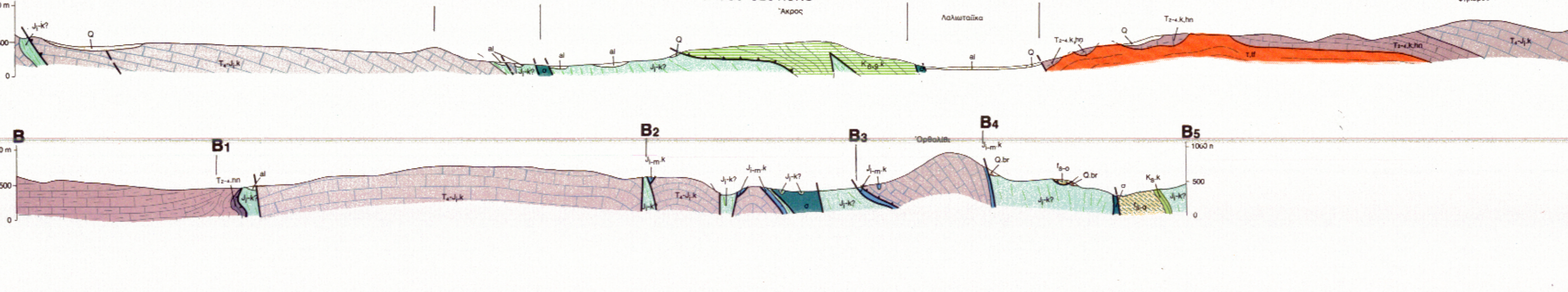
- Αιολιόβελος
The flysch sediments reach their largest extent in the region of Ligourion - Nea Epidaurou.
Παλιότερα ορεινή
The flysch sedimentation starts rather abruptly with transgression on 'Pantokrator' limestones, diabase - chert - tuffite formation, and upper cretaceous limestones.

ΙΝΣΤΙΤΟΥΤΟ ΓΕΩΛΟΓΙΚΩΝ ΚΑΙ ΜΕΤΑΛΛΕΥΤΙΚΩΝ ΕΡΕΥΝΩΝ
ΦΥΛΛΟ ΛΥΓΟΥΡΙΩΝ

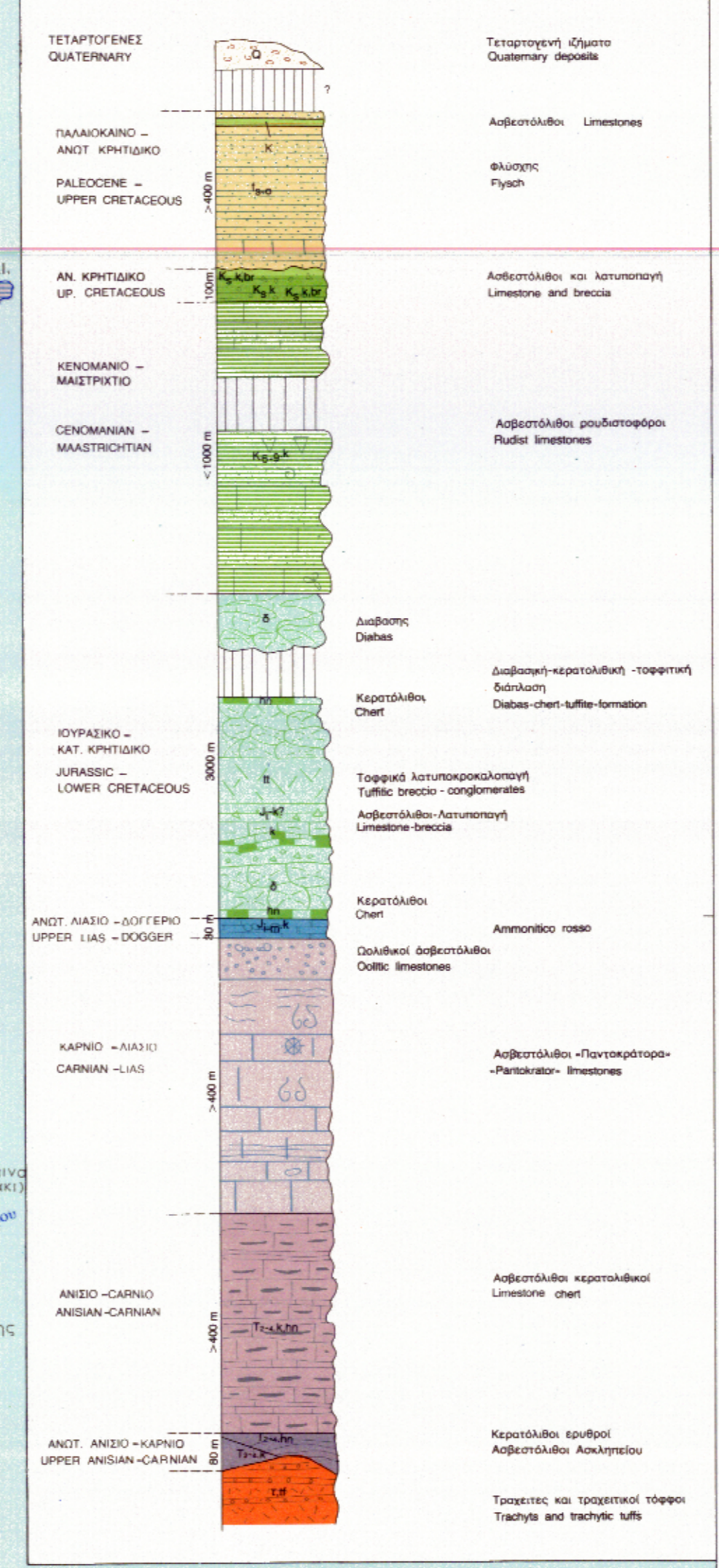
ΦΥΛΛΟ ΛΥΓΟΥΡΙΩΝ



ΓΕΩΛΟΓΙΚΕΣ ΤΙΜΕΣ



ΣΤΡΑΤΙΓΡΑΦΙΚΗ ΣΤΗΝΗ
STRATIGRAPHIC COLUMN



ΑΝΩΤ. ΑΣΙΑΤ. - ΔΟΓΓΕΡΟ

Αιολιόβελος - Ammonites Rosso in large lots. Their age ranges from Domerian and Turanian to Daggar with Ammonites...

Αιολιόβελος - Ammonites Rosso in large lots. Their age ranges from Domerian and Turanian to Daggar with Ammonites... representing a fauna of the Domerian.

Αιολιόβελος - Ammonites Rosso in large lots. Their age ranges from Domerian and Turanian to Daggar with Ammonites... representing a fauna of the Domerian.

Αιολιόβελος - Ammonites Rosso in large lots. Their age ranges from Domerian and Turanian to Daggar with Ammonites... representing a fauna of the Domerian.

Αιολιόβελος - Ammonites Rosso in large lots. Their age ranges from Domerian and Turanian to Daggar with Ammonites... representing a fauna of the Domerian.

Αιολιόβελος - Ammonites Rosso in large lots. Their age ranges from Domerian and Turanian to Daggar with Ammonites... representing a fauna of the Domerian.

Αιολιόβελος - Ammonites Rosso in large lots. Their age ranges from Domerian and Turanian to Daggar with Ammonites... representing a fauna of the Domerian.

Αιολιόβελος - Ammonites Rosso in large lots. Their age ranges from Domerian and Turanian to Daggar with Ammonites... representing a fauna of the Domerian.

Αιολιόβελος - Ammonites Rosso in large lots. Their age ranges from Domerian and Turanian to Daggar with Ammonites... representing a fauna of the Domerian.

Αιολιόβελος - Ammonites Rosso in large lots. Their age ranges from Domerian and Turanian to Daggar with Ammonites... representing a fauna of the Domerian.

Αιολιόβελος - Ammonites Rosso in large lots. Their age ranges from Domerian and Turanian to Daggar with Ammonites... representing a fauna of the Domerian.

Αιολιόβελος - Ammonites Rosso in large lots. Their age ranges from Domerian and Turanian to Daggar with Ammonites... representing a fauna of the Domerian.

Αιολιόβελος - Ammonites Rosso in large lots. Their age ranges from Domerian and Turanian to Daggar with Ammonites... representing a fauna of the Domerian.